



HERMOSA+
Face & Palm Vein Recognition Smart Door Lock

Product Architecture



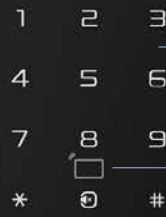
4.5inch IPS Screen
(know who is at the door)



AI camera
3D face recognition,
Palm Vein recognition,
Video Intercom



Keypad



Card Reader



Door Bell



Unlock Button



Privacy Lock
(Night Latch)



Emergency Door
Opening Knob



Finger Print
(Handle Back)



Emergency Key &
Charging
(Behind the Handle)



Smart Access



Mobile App



Face Recognition



Palm Vein Recognition



Finger Print



Pin Code



RFID Card



NFC Card



One Time Password



Limited Time Password



Mechanical Key

3D Face Recognition



1.2-2m

height range

0.3-1m

face recognition distance

≤1.5s

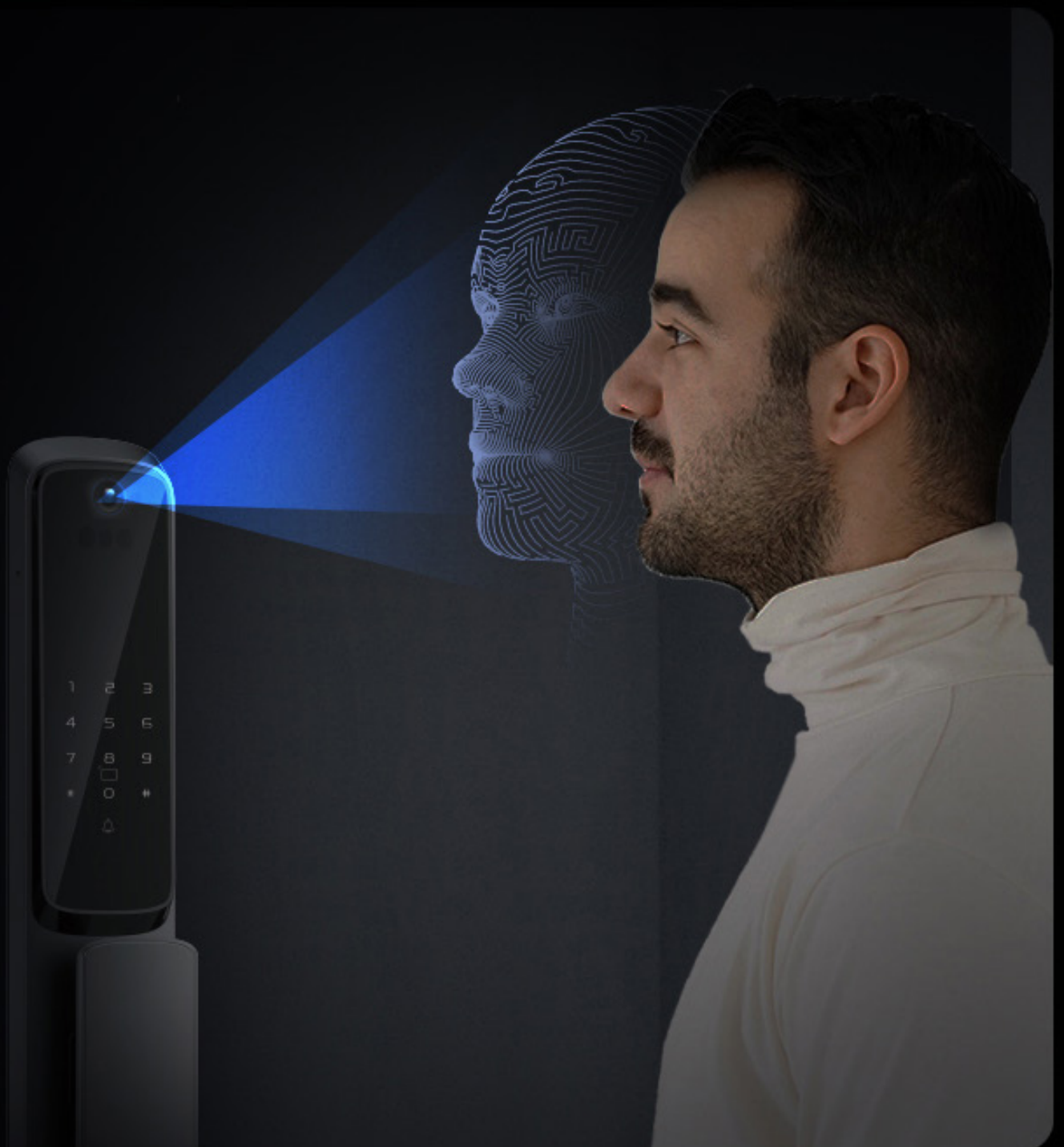
face recognition speed

20人

face ID: 20PCS

<0.0001%

false recognition rate



Palm Vein Recognition



A2 Palm vein recognition uses the unique patterns of **veins inside a person's palm** to identify and verify individuals. It's **highly secure, non-invasive, and reliable**. Contactless Unlocking, 99.99% Accuracy: It remains unaffected by your hands' condition, ensuring reliable recognition regardless of sweaty, dusty, or pigmented hands.



**BREAKING THROUGH
HEIGHT RESTRICTIONS**
EVEN CHILDREN CAN EASILY UNLOCK IT

Video Door Bell with Intercom

Remote Unlock



Active Video Intercom provides real time surveillance.
The door bell auto wake up when someone approach the door.
Remotely Unlock your door from anywhere in the world

Full Control on Your Finger Tips

A2 Smart Living App



Remote Door Access

Unlock your door from anywhere in the world

Video Surveillance

See who is at the door on your phone

Member Management

Invite other App users join the family member to share smart devices

Notifications & Alerts

Real time notifications on Door Open/Close/Intrusion alerts

Audit Trail

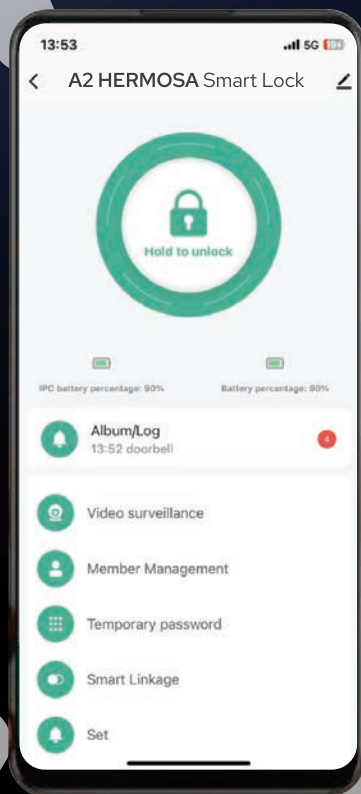
See who accessed the door & when

Temporary Password

Generate One Time password or Limited Time password

Battery Display

Know real status of the batteries



Turn your smartphone into your key. The intuitive A2 Smart Living App lets you manage the access of your door lock remotely from anywhere in the world.



One Tap to Unlock a world of Safety & Convenience

Automatic Silent Mortise Lock

Opening the door at night won't disturb the family



patented reversible latch design

$\leq 0.6s$ unlocking / locking time

door-unclosed alarm, door ajar alarm



01
patented reversible
latch design

02
silencing block

03
silent motor

04
toothed gearing



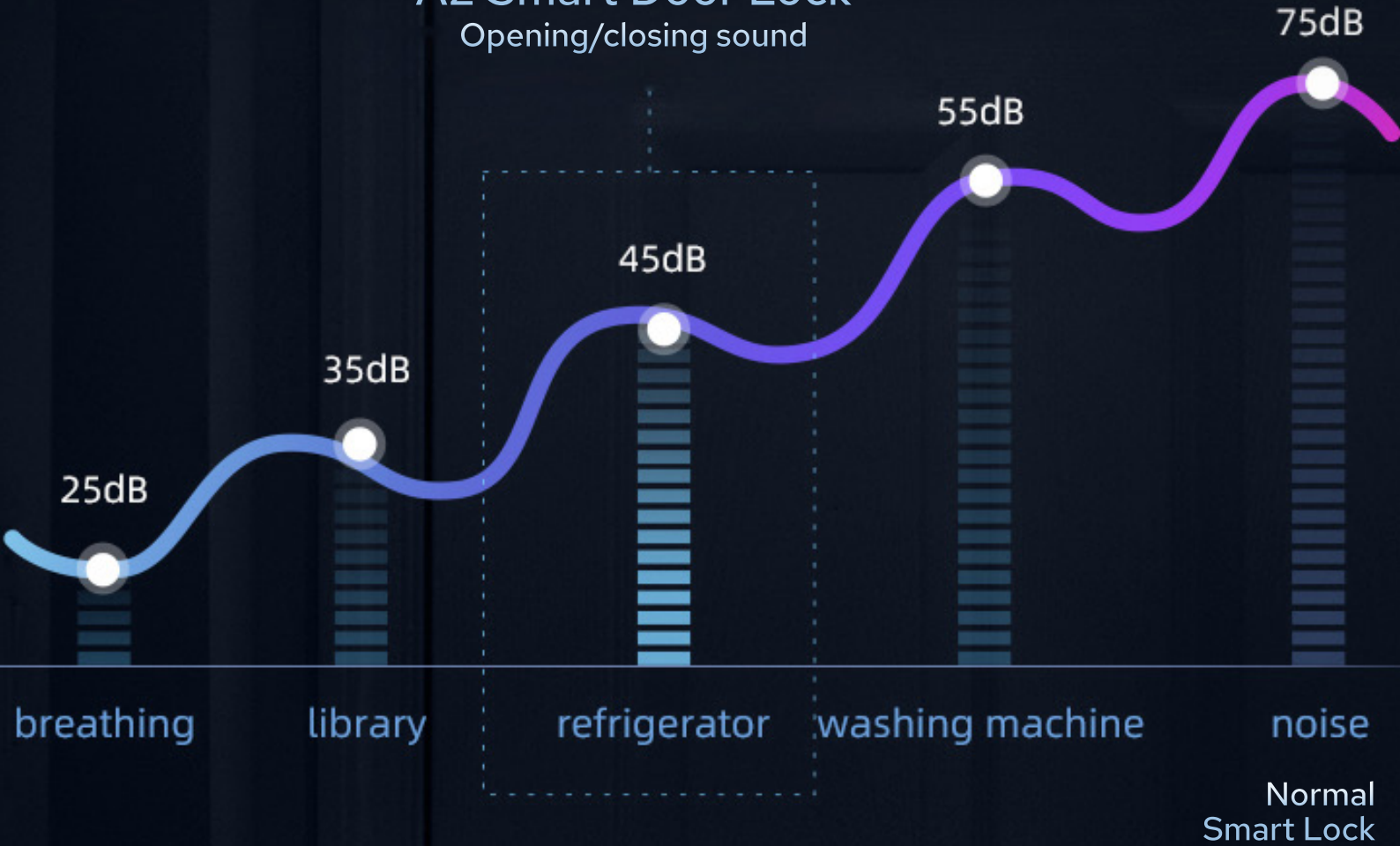
Your Family Can Sleep Peacefully

Open and close door volume* $\leq 45\text{dB}$, silent protection



A2 Smart Door Lock

Opening/closing sound



*Compared to other Smart Locks

Safety Designs



- type-C emergency charging port



- level C European standard



- emergency mechanical knob



- anti-peeping virtual password



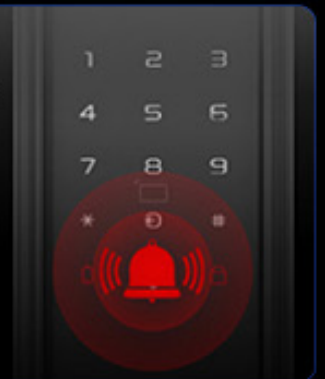
- arm alarm



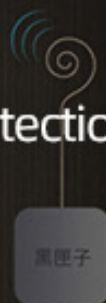
- child lock setting



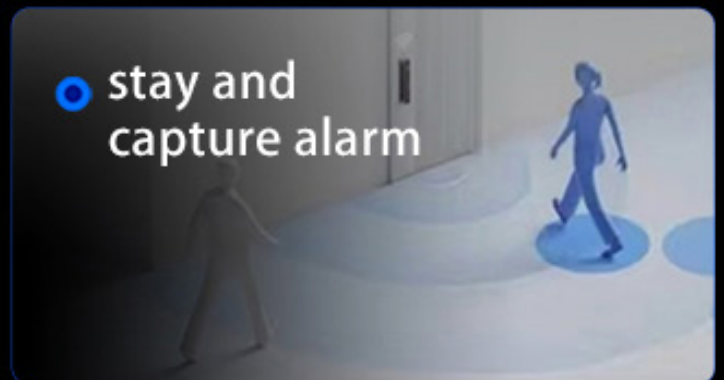
- intimidation alarm



- electromagnetic interference (EMI) protection



- stay and capture alarm



Door Lock Detections



• door ajar alarm



• 5 times wrong verification



• door-unclosed



• tamper alarm



• abnormal mortise lock alarm



• Low Voltage



Lithium Battery + Dry Battery

lithium battery main power supply, dry battery auxiliary



500mAh lithium battery

Battery life: 4-6 months

4 AA Batteries

Battery life: 1-2 years

Technical Details



No. of Users	Face (20), Palm Vein (20), Fingerprint (100), Card (100), Pin (20)
Mortise Lock	Fully Automatic Silent Lock, 70mm Backset, SS-304
Display	4.5 inch IPS Screen
Battery	Rechargeable Lithium Battery (Primary) + 4 pcs AA Alkaline battery (Backup)
Door Types	Wooden, Metal
Door Thickness	35-120mm
Color	Champagne Gold, Matte Black





A2 Building Solutions is dedicated to revolutionising home security with smart, reliable, and user-friendly solutions. Founded on the principles of innovation and quality, we specialise in creating advanced door hardware that blend International design with cutting-edge technology.

SWEDEN

A2 Building Solutions AB
Stora Wäsby, Upplands Väsby
Sweden 19437

MIDDLE EAST

A2 Building Solutions Trading LLC
Unit 3509, Burlington Tower,
Business Bay, Dubai - 417764

NORTH AMERICA

A2 Building Solutions North America
1203-2020 Fullerton Ave,
North Vancouver, BC Canada V7P 3G3

HONG KONG

A2 Building Solutions (HK) Ltd
5/F, Ming Sang Ind Building
19-21 Hing Yip Street
Kwun Tong, Hong Kong

INDIA

A2 Building Solutions India Pvt. Ltd.
4th Floor, BPTP Centra One
Sector-61, Gurgaon - 122101

