

DC 6000ELBC Door Closer

- America Style Designed, Heavy Duty for Commercial Doors.
- UL Certificated, 2 Million Cycles in Endurance
- Precise Cast Iron Body & Forged Steel Arm, Hold Open Arm Optional.
- Adjustable Closing & Latching Speed.
- Adjustable Back-Check, Delay Action Optional.
- Precision Heavy Duty Rack(Piston) & Pinion Gear, Needle Bearing.
- Decorative Plastic Cover & Stainless Steel Cover Optional.
- Barrier Free, Lower opening resistance for the handicapped / Elderly.

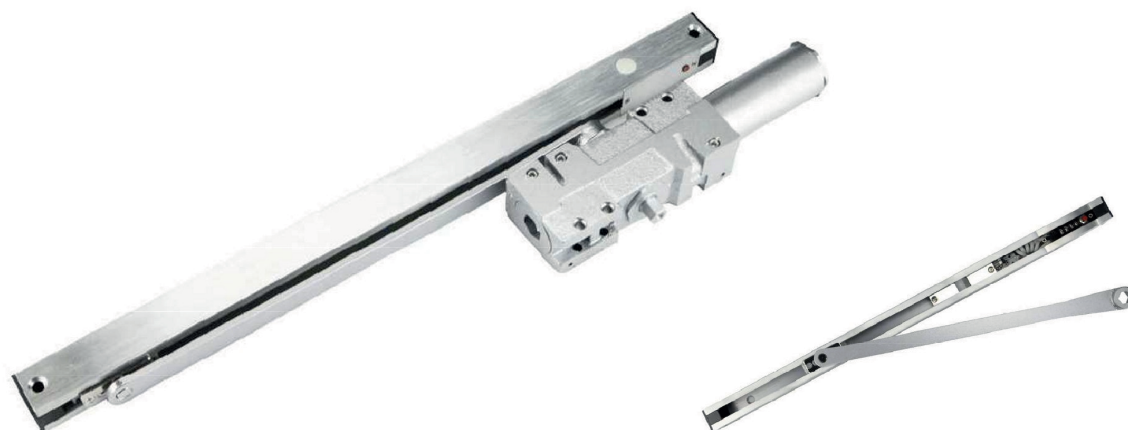
Combine heavy duty closers, the electrically controlled hold-open Slide arm to control fire and smoke barrier doors.

Designed to hold swinging doors open in normal use and release and automatically close the doors under fire conditions.

24V DC or 110V-120V AC input

When current is interrupted, hold-open releases and door closes

Can be pushed safely and easily out of hold-open Functions as full rack and pinion door closer when hold-open is not engaged or current is interrupted, Adjustable hydraulic backcheck cushions opening swing prior to 90° Separate regulation of general closing speed and latching speed High strength cast iron cylinder Forged steel main arm and piston



Technical Parameter

Door Weight (kgs)	Power Size	Door Width (mm)	Product Size (mm)	Back Check	Hold Open
15-150	1-6	750-1400	280x51x57	Yes	Optional

OPTIONAL WIRING CONNECTIONS

