

Euro Cylinder ECA Series



Application

A2 ECA series cylinder is an economic euro cylinder range for light duty application

Specifications and Features

- Standard euro profile dimension according to DIN18252
- Aluminium cylinder housing and solid brass core
- Brass keys
- 5 pins design
- Various lengths available for different door thickness
- Symmetrical and asymmetrical variants available to work with different lock installation positions

Finishes

- Satin Nickel (SN)
- Nickel Plated (NP)
- Brass Polished (BP)
- Antique Brass (AB)

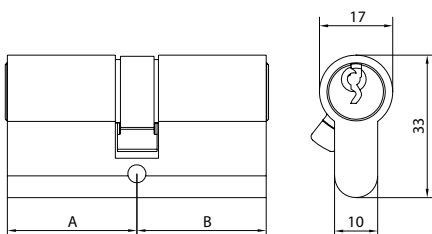
A2 PROFILE CYLINDER

Euro Cylinder ECA Series

Available Models

Double Profile Cylinder

Application: Keyed operation from either side (inside or outside).

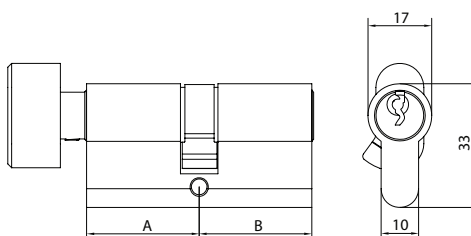


Item No.	A (30-60mm)	B (30-60mm)
ECA3030	30	30
ECA3035	30	35
ECA3535	35	35
ECA4040	40	40

* Dimensions in mm

Double Profile Cylinder with Thumb-turn

Application: Keyed operation from one side (outside) and thumb-turn operated from the other side (inside).

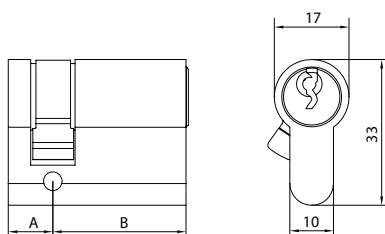


Item No.	A (30-60mm)	B (30-60mm)
ECA3030TK	30	30
ECA3035TK	30	35
ECA3535TK	35	35
ECA4040TK	40	40

* Dimensions in mm

Single Profile Cylinder

Application: Keyed operation from one side (outside) only.

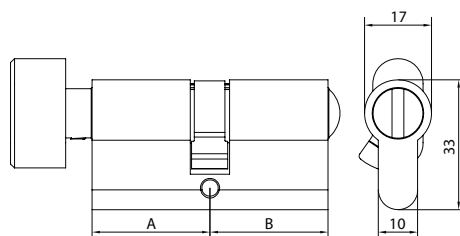


Item No.	A (30-60mm)	B (30-60mm)
ECA1030	10	30
ECA1035	10	35
ECA1040	10	40
ECA1045	10	45

* Dimensions in mm

Privacy/Bathroom Cylinder

Application: Thumb-turn operated from inside and emergency release slot operated from outside



Item No.	A (30-60mm)	B (30-60mm)
ECA3030WC	30	30
ECA3035WC	30	35
ECA3540WC	35	40
ECA4045WC	40	45

* Dimensions in mm