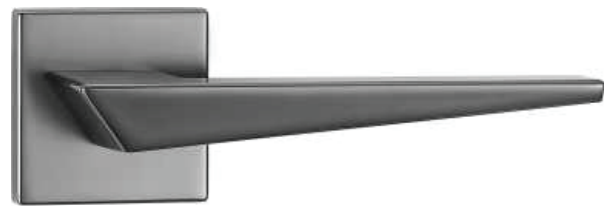
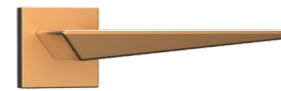


ELEGANTE Series

ELDH 101



Matt Gun Black
ELDH 101 MG



Gold
ELDH 101 GL



Matt Black
ELDH 101 MB



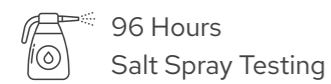
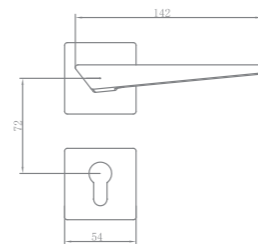
Material Specifications

Material : Zinc Alloy

Spindle : 8x8mm

Conforms to EN 1906

Matching escutcheons for euro cylinder



96 Hours
Salt Spray Testing



Left & Right
Compatible



Silent*
Door Closing



2,00,000
Cycle Testing



7 Layers
Electroplating

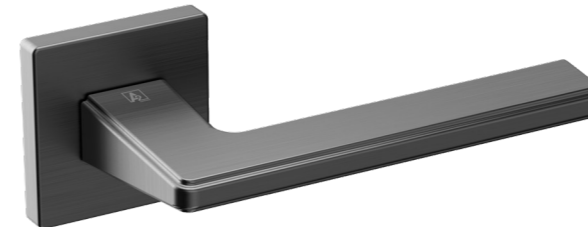


EN1906
Conformance

*With A2 Sweden Mortize Lock

ELEGANTE Series

ELDH 102



Satin Nickel
ELDH 102 SN



Gold
ELDH 102 GL



Matt Black
ELDH 102 MB



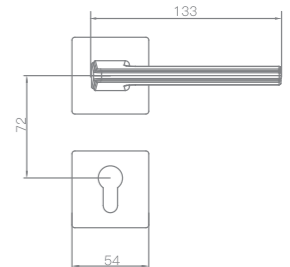
Material Specifications

Material : Zinc Alloy

Spindle : 8x8mm

Conforms to EN 1906

Matching escutcheons for euro cylinder



96 Hours
Salt Spray Testing



Left & Right
Compatible



Silent*
Door Closing



2,00,000
Cycle Testing



7 Layers
Electroplating

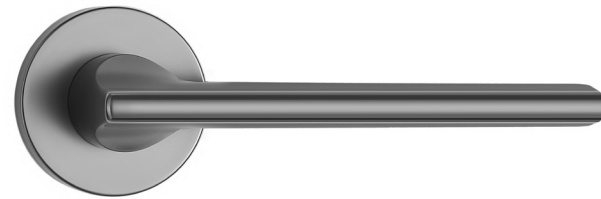


EN1906
Conformance

*With A2 Sweden Mortize Lock

ELEGANTE Series

ELDH 103



Matt Gun Black
ELDH 103 MG



Gold
ELDH 103 GL



Matt Black
ELDH 103 MB

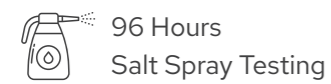
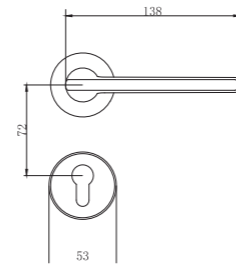
Material Specifications

Material : Zinc Alloy

Spindle : 8x8mm

Conforms to EN 1906

Matching escutcheons for euro cylinder



96 Hours
Salt Spray Testing



Left & Right
Compatible



Silent*
Door Closing



2,00,000
Cycle Testing



7 Layers
Electroplating



EN1906
Conformance

*With A2 Sweden Mortize Lock

ELEGANTE Series

ELDH 104



Matt Black
ELDH 104 MB



Gold
ELDH 104 GL

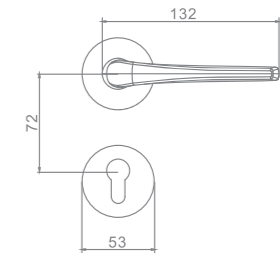
Material Specifications

Material : Zinc Alloy

Spindle : 8x8mm

Conforms to EN 1906

Matching escutcheons for euro cylinder



96 Hours
Salt Spray Testing



Left & Right
Compatible



Silent*
Door Closing



2,00,000
Cycle Testing



7 Layers
Electroplating

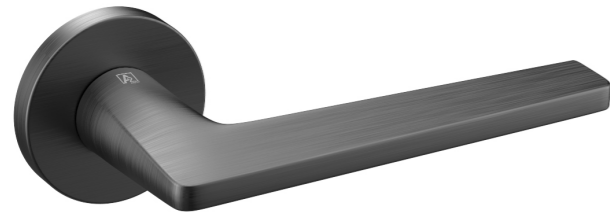


EN1906
Conformance

*With A2 Sweden Mortize Lock

ELEGANTE Series

ELDH 105



Satin Nickel
ELDH 105 SN



Gold
ELDH 105 GL



Matt Black
ELDH 105 MB

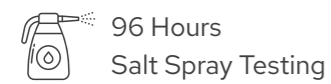
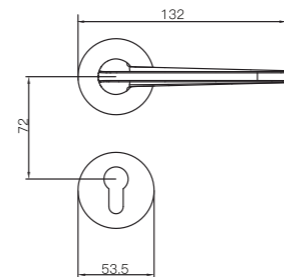
Material Specifications

Material : Zinc Alloy

Spindle : 8x8mm

Conforms to EN 1906

Matching escutcheons for euro cylinder



96 Hours
Salt Spray Testing



Left & Right
Compatible



Silent*
Door Closing



2,00,000
Cycle Testing



7 Layers
Electroplating



EN1906
Conformance

*With A2 Sweden Mortize Lock

ELEGANTE Series

ELDH 106



Matt Black
ELDH 106 MB



Gold
ELDH 106 GL



Matt Black
ELDH 106 MB

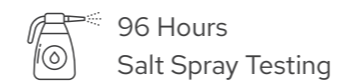
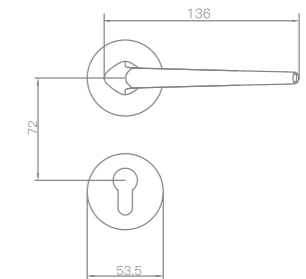
Material Specifications

Material : Zinc Alloy

Spindle : 8x8mm

Conforms to EN 1906

Matching escutcheons for euro cylinder



96 Hours
Salt Spray Testing



Left & Right
Compatible



Silent*
Door Closing



2,00,000
Cycle Testing



7 Layers
Electroplating



EN1906
Conformance

*With A2 Sweden Mortize Lock