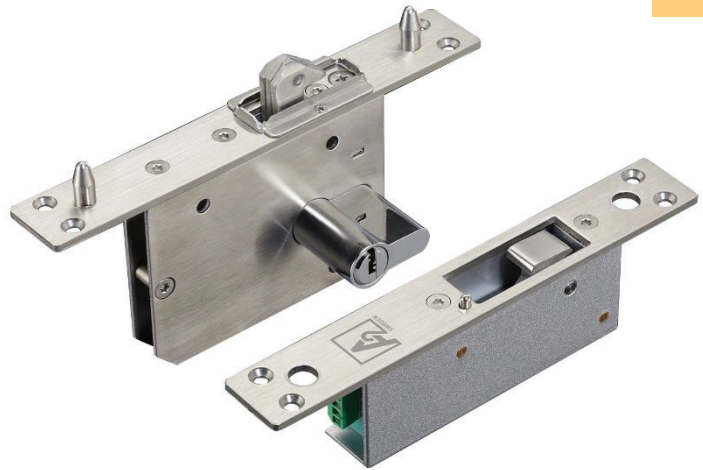


ELECTRO-MECHANICAL LOCK



A2MOL-FO/FL-SCH

A2MOL electric lock for sliding door is all-metal structure, specially designed for sliding door, equipped with European standard lock cylinder. It can achieve the dual purpose of electric control at ordinary times and manual operation in emergency. The bolt is made of solid steel, processed by CNC, and can withstand 800kg push/pull force, special high security design of anti-prying function after locking, and all the linkage parts are made of metal structure, can be used normally from -40 degree to 60 degree. Professional durable solenoid valve, excellent performance, safe and durable, is the first choice for security project.



Cylinder not included

Features

- Electric Hook Bolt Lock for Sliding Doors: Special Design with two Latches and SU 304 Stainless Anti-vandal protector Fail safe A2MOL-FO-SCH and fail secure A2MOL-FL-SCH option suitable for EN 13637 (FO model) and EN 179
- Weather resistance indoor/outdoor use
- Resistance to forced entry up to 8,000 N
- Mechanical Override Key and Electronic Control
- Endurance: Cycle tested to 500,000 operations

Technical specifications

- Cylinder function: Unlocks key override or Thumb turn.
- Voltage: 12 V DC
- Current: 200mA (FO model), 240mA (FL model)
- Door status signal output (NC/COM/NO)
- Dimensions: 170L x 26W x 39.5H (mm) Electric strike\ 170L x 26W x 93H (mm) Mechanical side
- Operational temperature range - 20 °C to +60 °C
- IP65 waterproof and vandal-proof protection
- Weight: 1.4kg
- Certificate: CE, EMC, LVD, FCC, VOC, REACH, WEEE

Applications

A2MOL Hook Lock is suitable for swinging doors and sliding doors. A2MOL is heavy duty designed with its high preload (side load) capability, high holding force and waterproof rating with vandal-proof function. Both Power to Open and Power to Lock models are available.

