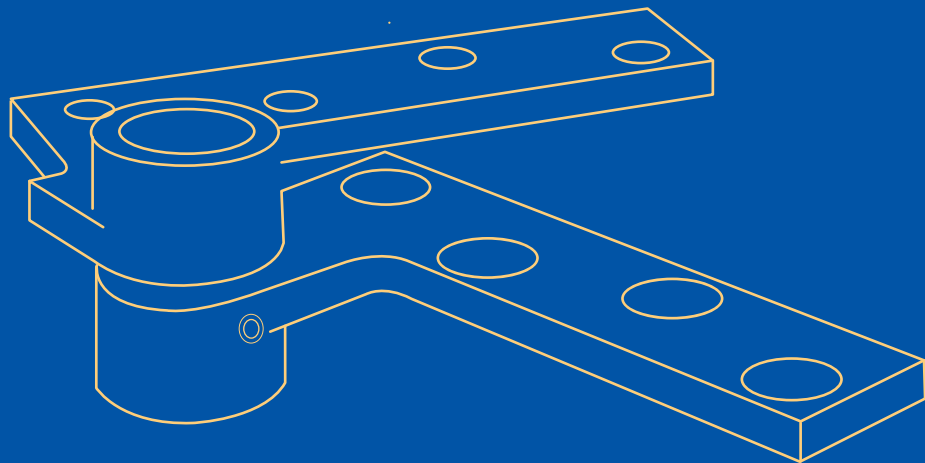




PIVOT SETS

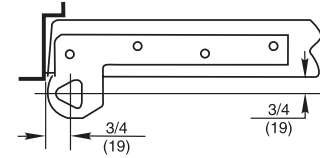
A2ND GENERATION OF DOOR HARDWARE



GENERAL INFORMATION

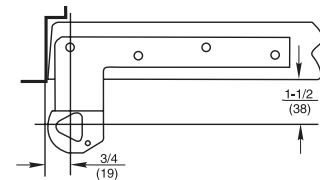
Pivot sets provide the best possible means of hanging a door. They are designed to work with the laws of physics to provide long-lasting performance and reliability.

- The weight of the door is supported at the bottom by the floor
 - Uses principles of gravity to its advantage
 - Door swings with less resistance
 - Heavier doors can be accommodated
- Reduced stress on frame
 - Fasteners are in shear, not tension
 - Eliminates door sag
 - Vertically adjustable
- Heavy-duty hardened steel spindles
 - Thrust bearing supports vertical load
 - Needle bearings and bushings for lateral force
 - Extra heavy-duty models also have an additional surface applied thrust bearing to handle heavier or high-traffic doors
- Offset pivots provide better weight distribution and can accommodate taller doors
- Intermediate pivots are used for alignment and to ensure proper installation of bottom pivot or floor closer
- Center hung pivots are used for aesthetics or if the pivot point is going to be moved nearer the lock edge of the door



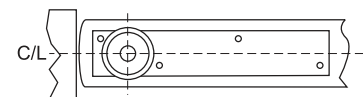
3/4" OFFSET

Pivot point located 3/4" from the heel edge of the door and 3/4" from face of door.



1-1/2" OFFSET

Pivot point located 3/4" from the heel edge of the door and 1-1/2" from face of door. Extended offsets should be used when there is cladding on the face of door or trim on the frame.

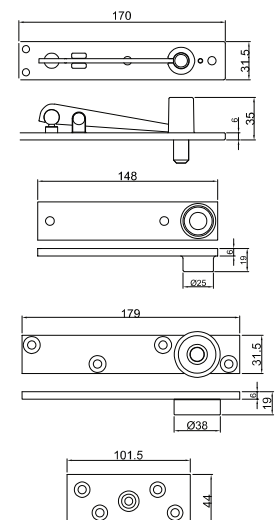
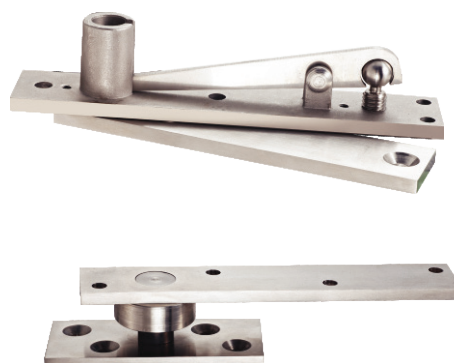


CENTER HUNG

Pivot point centered in thickness of door.

A2PH250 Center Pivot

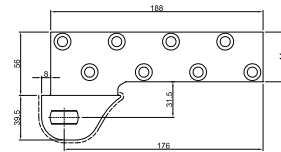
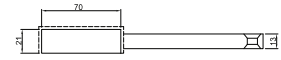
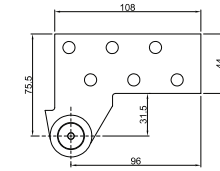
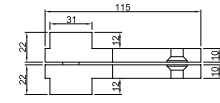
- Suitable for wooden doors and steel doors
- Precision bearings for smooth operation with dust proof
- Compliance with:
 - ANSI/BHMAA156.4, Grade 1
 - UL10C, 3 hours fire rated
- Load capacity: 500lbs (250KG)
- Non handed.
- Minimum door thickness: 45mm
- Material: stainless steel 304
- Finish: SS, PS, PVD



PIVOT SETS

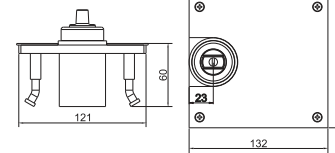
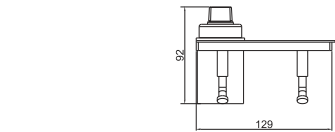
Heavy duty Offset Pivot A2PH1000 (with A2PH1000-FL) Door weight up to 1000kg

- Stainless steel 304, super anti-corrosive, durable and easy to clean
- Additional thrust bearing for greater load capacity, dust proof
- For wood door and metal door, weight to 1000kg.
- Door edges must be beveled in 1/8" in 2"
- Minimum door thickness 50mm
- Vertical adjust 4.5mm
- Non Handed
- Finish: SSS, PSS, PVD



A2PH1000-FL

Door weight up to 1000kg

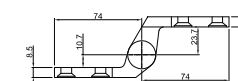
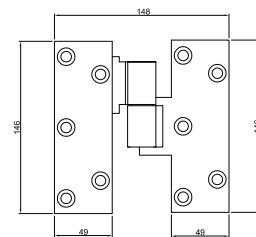
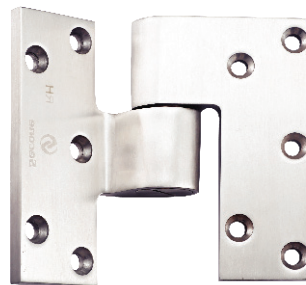


A2PH1000-2-LH/RH Intermediate Pivot

- ANSI/BHMA NO: C07321/C07371
- Full Mortise
- Stainless steel 304, super anti-corrosion, durable, and easy to clean.
- Aids in installing floor closers and bottom pivots, Maintains door alignment
- Handed
- Vertical adjust 4.5mm

Marks

- Use for door heights over 7'0" and one every 2'6" or
- Use for door weight over the pivot set limit.
- One additional for every additional 46kg





SWEDEN

A2 Building Solutions AB
Stora Wäsby, Upplands Väsby
Sweden 19437

DUBAI

A2 Building Solutions
Unit 3509, 35th Floor,
Burlington Tower, Business Bay,
Dubai, UAE
P.O. Box 417764

INDIA

A2 Building Solutions India Pvt. Ltd.
6th Floor, Good Earth Business Bay-1,
Sector-58, Gurgaon

PIVOT SETS