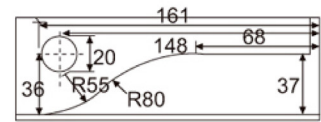
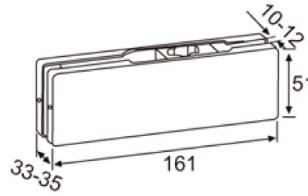


# Patch Fitting

## PF-10



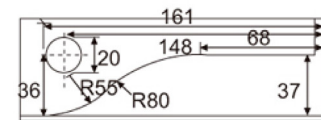
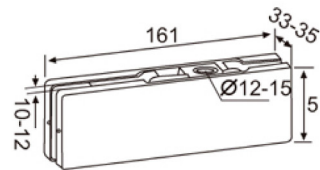
Fit for Glass thickness : 10mm/12mm

Material : Aluminum/Zinc Alloy, SS Cover Plate

Finish : Satin SS(US32D) / Polished SS(US32)

Chuck : SS, 15mm Pivot

## PF-20



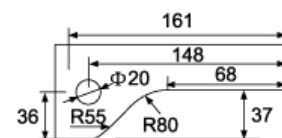
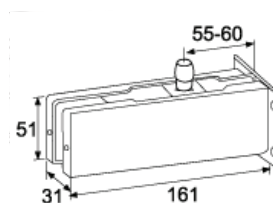
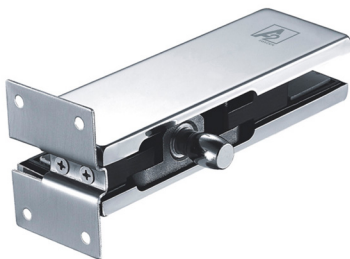
Fit for Glass thickness : 10mm/12mm

Material : Aluminum/Zinc Alloy, SS Cover Plate

Finish : Satin SS(US32D) / Polished SS(US32)

Chuck : SS, 15mm Pivot

## PF-30



Fit for Glass thickness : 10mm/12mm

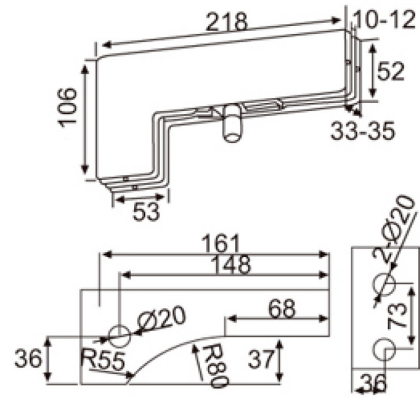
Material : Aluminum/Zinc Alloy, SS Cover Plate

Finish : Satin SS(US32D) / Polished SS(US32)

Pivot : SS, 15mm

# Patch Fitting

## PF-40



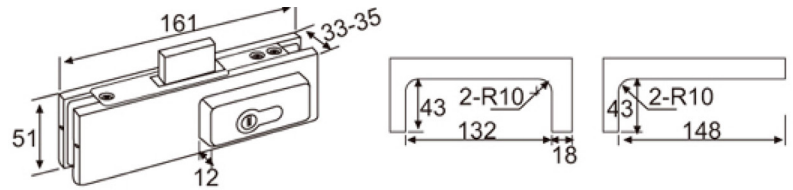
Fit for Glass thickness : 10mm/12mm

Material : Aluminum/Zinc Alloy, SS Cover Plate

Finish : Satin SS(US32D) / Polished SS(US32)

Pivot : SS, 15mm

## PF-50



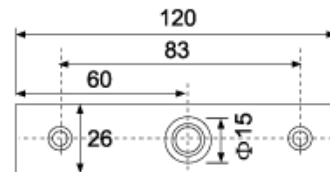
Fit for Glass thickness : 10mm/12mm

Material : Aluminum/Zinc Alloy, SS Cover Plate

Finish : Satin SS(US32D) / Polished SS(US32)

Cylinder : Brass with 3 Keys

## TP-10



Material : SS 304

Finish : Satin SS(US32D) / Polished SS(US32)

Pivot : SS, 15mm



## **SWEDEN**

**A2 Building Solutions AB**  
Stora Wäsby, Upplands Väsby  
Sweden 19437

## **DUBAI**

**A2 Building Solutions**  
Unit 3509, 35<sup>th</sup> Floor,  
Burlington Tower, Business Bay,  
Dubai, UAE  
P.O. Box 417764

## **INDIA**

**A2 Building Solutions India Pvt. Ltd.**  
6<sup>th</sup> Floor, Good Earth Business Bay-1,  
Sector-58, Gurgaon

**FLOOR SPRING**