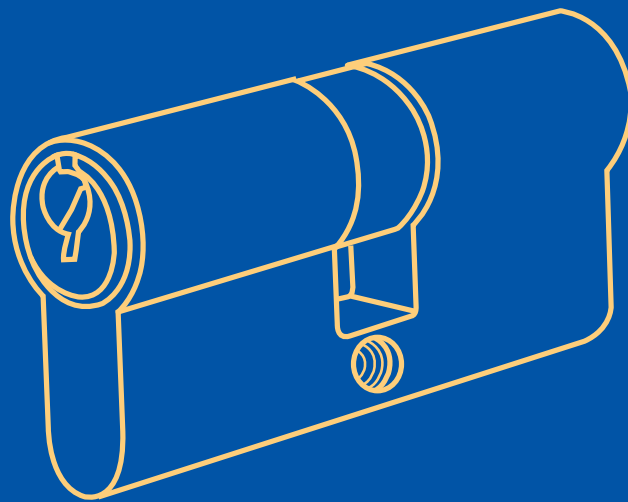




# MECHANICAL CYLINDER

A2<sup>ND</sup> GENERATION OF DOOR HARDWARE



# Euro Cylinder ECD Series



## Application

A2 ECD Series cylinder is euro cylinder with dimpled pin system suitable for commercial or residential application to provide extra security

## Specifications and Features

- Standard euro profile dimension according to DIN18252
- Solid brass body and keys
- Reversible key operation (double sided dimpled keys)
- Various lengths available for different door thickness
- Symmetrical and asymmetrical variant available to work with different lock installation position
- 6 pins construction to maximize key combination & security
- Anti-drill pins and Anti-pick pins available upon request
- Enhanced attack resistance provided by A2 security

## Standards and Certification



Successfully type-tested for conformity to all of the requirements of EN1303:2005



Successfully passed 240-minutes fire test of metal door assemblies to EN1634-1:2014



All test performed independently and certified by Exova/Warringtonfire/ Warrington APT. Test reports and/or certificates are available on request

### EN1303:2005 Classification

1	6	0	1	0	C	5	2
---	---	---	---	---	---	---	---

## Finishes

- Satin Nickel (SN)
- Nickel Plated (NP)
- Brass Polished (BP)
- Antique Brass (AB)

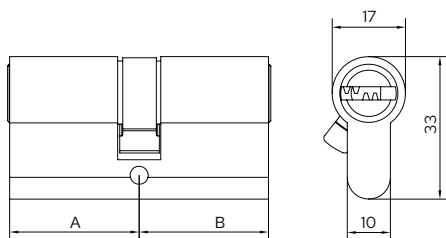
# A2 Profile Cylinder

## Euro Cylinder ECD Series

### Available Models

#### Double Profile Cylinder

Application: Keyed operation from either side (inside or outside).

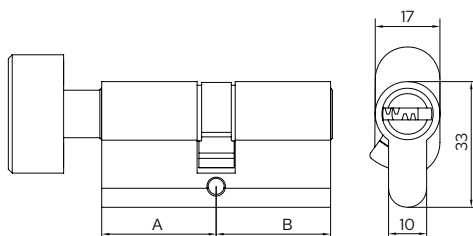


Item No.	A (30-60mm)	B (30-60mm)
ECD3030	30	30
ECD3035	30	35
ECD3535	35	35
ECD3540	35	40

\* Dimensions in mm

#### Double Profile Cylinder with Thumb-turn

Application: Keyed operation from one side (outside) and thumb-turn operated from the other side (inside).

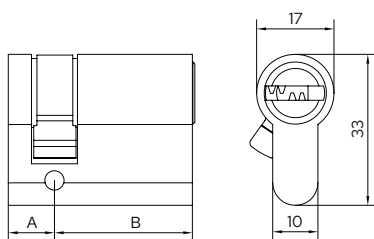


Item No.	A (30-60mm)	B (30-60mm)
ECD3030TK	30	30
ECD3035TK	30	35
ECD3535TK	35	35
ECD3540TK	35	40

\* Dimensions in mm

#### Single Profile Cylinder

Application: Keyed operation from one side (outside) and thumb-turn operated from the other side (inside).



Item No.	A	B (30-60mm)
ECD1030	10	30
ECD1035	10	35
ECD1040	10	40
ECD1045	10	45

\* Dimensions in mm

# Euro Cylinder ECS Series



## Application

A2 ECS series cylinder is manageable euro cylinder with keying ability suitable for commercial or residential application with specific access requirement

## Specifications and Features

- Standard euro profile dimension according to DIN18252
- Solid brass body and keys
- 5 or 6 pins constructions
- Various lengths available for different door thickness
- Symmetrical and asymmetrical variants available to work with different lock installation positions
- Optional anti-drill pins and anti-pick pins
- Enhanced attack resistance provided by A2 security
- Master keying service available upon request

## Standards and Certification



Successfully type-tested for conformity to all of the requirements of EN1303:2005



Successfully passed 240-minutes fire test of metal door assemblies to EN1634-1:2014



All test performed independently and certified by Exova/Warringtonfire/ Warrington APT. Test reports and/or certificates are available on request

### EN1303:2005 Classification

1	6	0	1	0	C	5	2
---	---	---	---	---	---	---	---

## Finishes

- Satin Nickel (SN)
- Nickel Plated (NP)
- Brass Polished (BP)
- Antique Brass (AB)

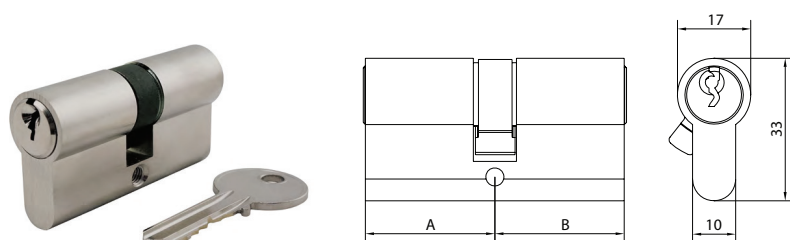
# A2 Profile Cylinder

## Euro Cylinder ECS Series

### Available Models

#### Double Profile Cylinder

**Application:** Keyed operation from either side (inside or outside).

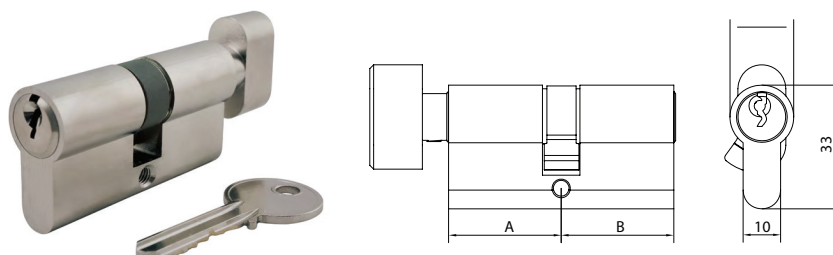


Item No.	A (30-60mm)	B (30-60mm)
ECS3030	30	30
ECS3035	30	35
ECS3535	35	35
ECS4040	40	40

\* Dimensions in mm

#### Double Profile Cylinder with Thumb-turn

**Application:** Keyed operation from one side (outside) and thumb-turn operated from the other side (inside).

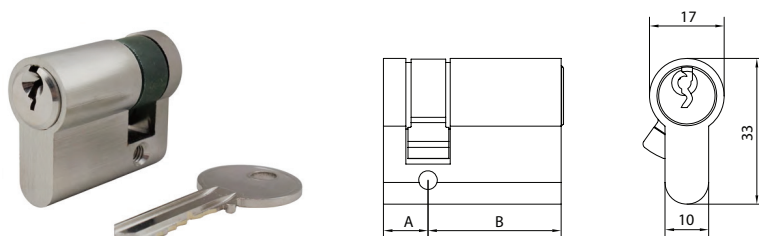


Item No.	A (30-60mm)	B (30-60mm)
ECS3030TK	30	30
ECS3035TK	30	35
ECS3535TK	35	35
ECS4040TK	40	40

\* Dimensions in mm

#### Single Profile Cylinder

**Application:** Keyed operation from one side (outside) only.

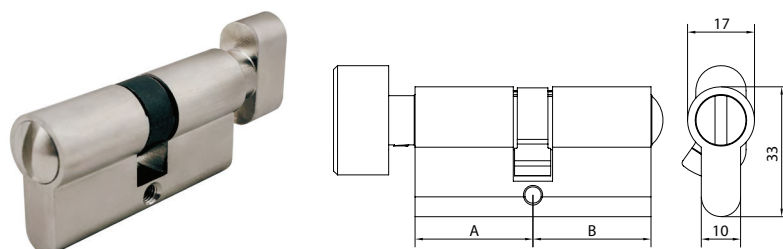


Item No.	A (30-60mm)	B (30-60mm)
ECS1030	10	30
ECS1035	10	35
ECS1040	10	40
ECS1045	10	45

\* Dimensions in mm

#### Privacy/Bathroom Cylinder

**Application:** Thumb-turn operated from inside and emergency release slot operated from outside



Item No.	A (30-60mm)	B (30-60mm)
ECS3030WC	30	30
ECS3035WC	30	35
ECS3540WC	35	40
ECS4045WC	40	45

\* Dimensions in mm

## Euro Cylinder ECA Series

---



### Application

A2 ECA series cylinder is an economic euro cylinder range for light duty application

### Specifications and Features

- Standard euro profile dimension according to DIN18252
- Aluminium cylinder housing and solid brass core
- Brass keys
- 5 pins design
- Various lengths available for different door thickness
- Symmetrical and asymmetrical variants available to work with different lock installation positions

### Finishes

- Satin Nickel (SN)
- Nickel Plated (NP)
- Brass Polished (BP)
- Antique Brass (AB)

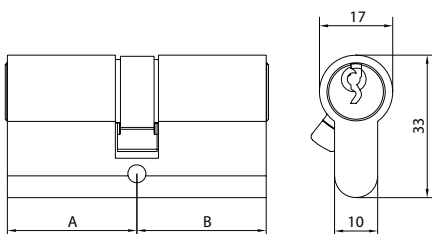
# A2 PROFILE CYLINDER

## Euro Cylinder ECA Series

### Available Models

#### Double Profile Cylinder

**Application:** Keyed operation from either side (inside or outside).

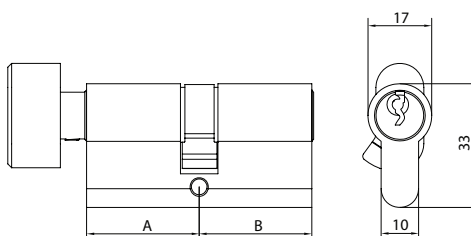


Item No.	A (30-60mm)	B (30-60mm)
ECA3030	30	30
ECA3035	30	35
ECA3535	35	35
ECA4040	40	40

\* Dimensions in mm

#### Double Profile Cylinder with Thumb-turn

**Application:** Keyed operation from one side (outside) and thumb-turn operated from the other side (inside).

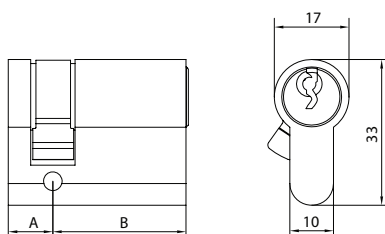


Item No.	A (30-60mm)	B (30-60mm)
ECA3030TK	30	30
ECA3035TK	30	35
ECA3535TK	35	35
ECA4040TK	40	40

\* Dimensions in mm

#### Single Profile Cylinder

**Application:** Keyed operation from one side (outside) only.

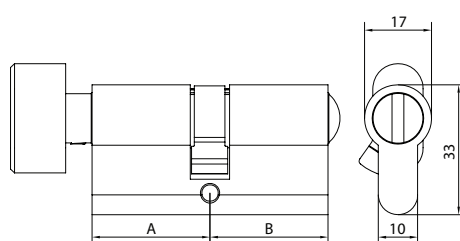


Item No.	A (30-60mm)	B (30-60mm)
ECA1030	10	30
ECA1035	10	35
ECA1040	10	40
ECA1045	10	45

\* Dimensions in mm

#### Privacy/Bathroom Cylinder

**Application:** Thumb-turn operated from inside and emergency release slot operated from outside



Item No.	A (30-60mm)	B (30-60mm)
ECA3030WC	30	30
ECA3035WC	30	35
ECA3540WC	35	40
ECA4045WC	40	45

\* Dimensions in mm



## **SWEDEN**

**A2 Building Solutions AB**  
Stora Wäsby, Upplands Väsby  
Sweden 19437

## **DUBAI**

**A2 Building Solutions**  
Unit 3509, 35<sup>th</sup> Floor,  
Burlington Tower, Business Bay,  
Dubai, UAE  
P.O. Box 417764

## **INDIA**

**A2 Building Solutions India Pvt. Ltd.**  
6<sup>th</sup> Floor, Good Earth Business Bay-1,  
Sector-58, Gurgaon

**MECHANICAL  
CYCLINDER**