



FURNITURE FITTINGS

A 2ND GENERATION OF DOOR HARDWARE



Drawer Slide

Prima Series



Features



Cycle Testing : 50,000 cycles



Salt Spray Testing : 96 hrs



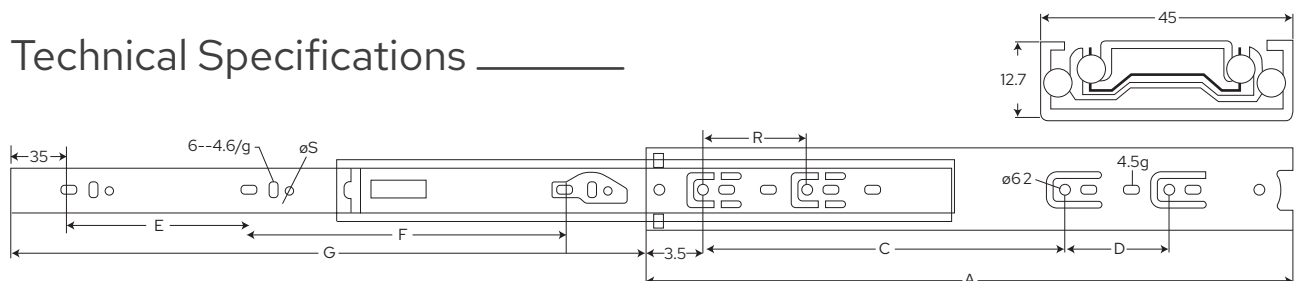
Weight Carrying Capacity : 45 kg

Material Specifications

- Material : High Grade Steel 1.0 x 1.0 x 1.2mm
- Rust proof electroplating
- Soft Glide technology with no noise
- Full extension drawer slides
- Available length : 10inch to 24inch
- Available Finish : Zinc Galvanised & Black

Size (inch)	MODEL	A	B	C	D	E	F	G
10"	FDS45- 10	250	64	128	/	160	/	247
12"	FDS45- 12	300	64	192	/	64	160	297
14"	FDS45- 14	350	64	192	64	96	160	347
16"	FDS45- 16	400	64	224	64	96	224	397
18"	FDS45- 18	450	64	288	64	128	224	447
20"	FDS45- 20	500	64	320	64	160	256	497
22"	FDS45- 22	550	64	384	64	192	256	547
24"	FDS45- 24	600	64	448	64	192	320	597

Technical Specifications



Heavy Duty Drawer Slide

Endura Series



Features



Cycle Testing : 1,00,000 cycles



Salt Spray Testing : 96 hrs



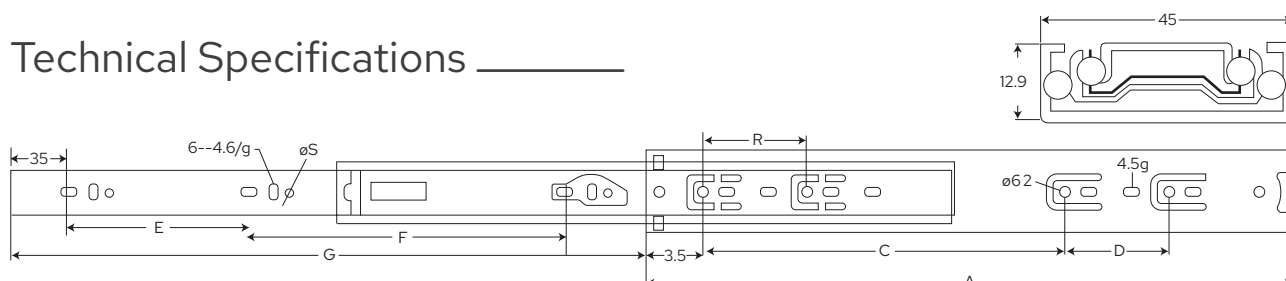
Weight Carrying Capacity : 45 kg

Material Specifications

- Material : High Grade Steel 1.2 x 1.2 x 1.4mm
- Rust proof electroplating
- Soft Glide technology with no noise
- Full extension drawer slides
- Available length : 10inch to 24inch
- Available Finish : Zinc Galvanised & Black

Size (inch)	MODEL	A	B	C	D	E	F	G
10"	FDS45H-10	250	64	128	/	160	/	247
12"	FDS45H-12	300	64	192	/	64	160	297
14"	FDS45H-14	350	64	192	64	96	160	347
16"	FDS45H-16	400	64	224	64	96	224	397
18"	FDS45H-18	450	64	288	64	128	224	447
20"	FDS45H-20	500	64	320	64	160	256	497
22"	FDS45H-22	550	64	384	64	192	256	547
24"	FDS45H-24	600	64	448	64	192	320	597

Technical Specifications



Soft Close Drawer Slide

Prima Series



Features



Cycle Testing : 50,000 cycles



Salt Spray Testing : 96 hrs



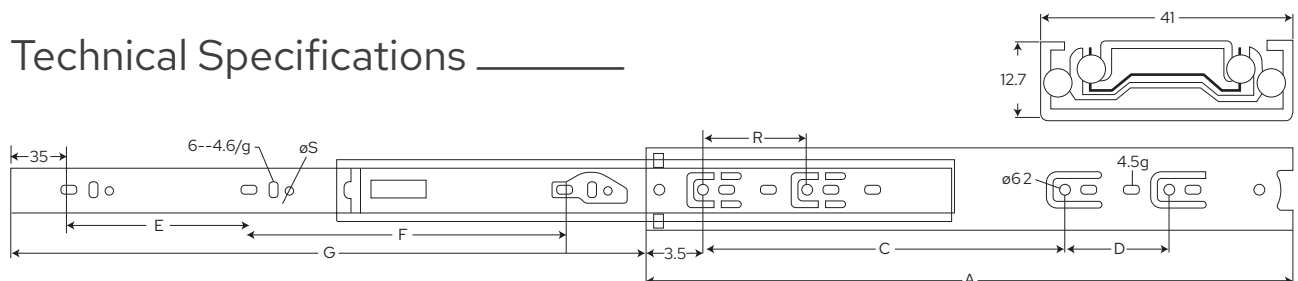
Weight Carrying Capacity : 45 kg

Material Specifications

- Material : High Grade Steel
1.0 x 1.0 x 1.2mm
- Rust proof electroplating
- Soft Glide technology with no noise
- Full extension drawer slides
- Available length : 12inch to 24inch
- Available Finish : Zinc Galvanised & Black

Size (inch)	MODEL	A	B	C	D	E	F	G
10"	FDS45SC- 10	250	64	128	/	160	/	247
12"	FDS45SC- 12	300	64	192	/	64	160	297
14"	FDS45SC- 14	350	64	192	64	96	160	347
16"	FDS45SC- 16	400	64	224	64	96	224	397
18"	FDS45SC- 18	450	64	288	64	128	224	447
20"	FDS45SC- 20	500	64	320	64	160	256	497
22"	FDS45SC- 22	550	64	384	64	192	256	547
24"	FDS45SC- 24	600	64	448	64	192	320	597

Technical Specifications



Soft Close Heavy Duty Drawer Slide

Endura Series



Soft Closing

Features



Cycle Testing : 1,00,000 cycles



Salt Spray Testing : 96 hrs



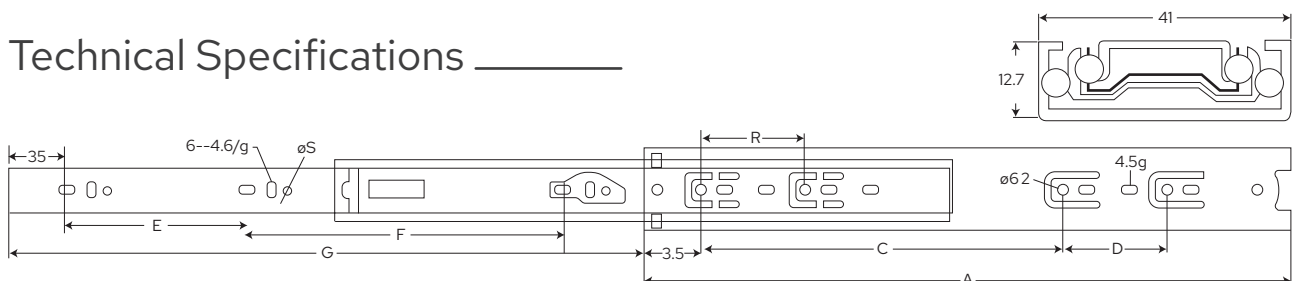
Weight Carrying Capacity : 45 kg

Material Specifications

- Material : High Grade Steel
1.2 x 1.2 x 1.2mm
- Rust proof electroplating
- Soft Glide technology with no noise
- Full extension drawer slides
- Available length : 10inch to 24inch
- Available Finish : Zinc Galvanised & Black

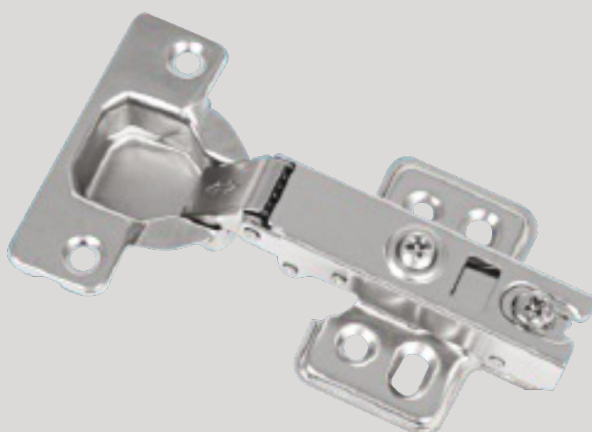
Size (inch)	MODEL	A	B	C	D	E	F	G
10"	FDS45HSC-10	250	64	128	/	160	/	247
12"	FDS45HSC-12	300	64	192	/	64	160	297
14"	FDS45HSC-14	350	64	192	64	96	160	347
16"	FDS45HSC-16	400	64	224	64	96	224	397
18"	FDS45HSC-18	450	64	288	64	128	224	447
20"	FDS45HSC-20	500	64	320	64	160	256	497
22"	FDS45HSC-22	550	64	384	64	192	256	547
24"	FDS45HSC-24	600	64	448	64	192	320	597

Technical Specifications



Cabinet Hinge

Regular Hinge



Features



Cycle Testing : 50,000 cycles



Salt Spray Testing : 96 hrs



Cerification : TUV

Material Specifications

Material : Cold Rolled Steel

Finish : Nickel / Black Nickel

Installation : Screw Fixing

Optional Accessories : Hinge Arm Cap



Full-overlay

FAH-01



Half-overlay

FAH-02



Inset

FAH-03

Opening Angle



100°

Screw Distance



45/55mm

Hinge Cup Dia



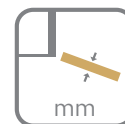
35mm

Hinge Cup Depth



11.5mm

Panel Thickness



16-20mm

Cabinet Hinge

Soft Close Hinge



Soft Closing

Features



Cycle Testing : 50,000 cycles



Salt Spray Testing : 96 hrs



Cerification : TUV

Material Specifications

Material : Cold Rolled Steel

Finish : Nickel / Black Nickel

Installation : Screw Fixing

Features : Soft Closing Mechanism

Optional Accessories : Hinge Arm Cap



Full-overlay
FAHSC-01



Half-overlay
FAHSC-02



Inset
FAHSC-03

Opening Angle



100°

Screw Distance



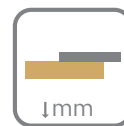
45/55mm

Hinge Cup Dia



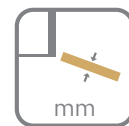
35mm

Hinge Cup Depth



11.5mm

Panel Thickness



16-20mm

Cabinet Hinge

Stainless Steel
Soft Close Hinge



Features



Cycle Testing : 50,000 cycles



Salt Spray Testing : 96 hrs



Cerification : TUV

Material Specifications

Material : Cold Rolled Steel

Finish : Nickel / Black Nickel

Installation : Screw Fixing

Features : Soft Closing Mechanism

Optional Accessories : Hinge Arm Cap



Full-overlay
FAHSC-01 SS



Half-overlay
FAHSC-02 SS



Inset
FAHSC-03 SS

Opening Angle



100°

Screw Distance



45/55mm

Hinge Cup Dia



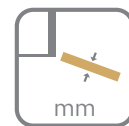
35mm

Hinge Cup Depth



11.5mm

Panel Thickness



16-20mm

Cabinet Hinge

Soft Close 3D Hinge



Soft Closing

Features



Cycle Testing : 50,000 cycles



Salt Spray Testing : 96 hrs



Cerification : TUV

Material Specifications

Material : Cold Rolled Steel

Finish : Nickel / Black Nickel

Installation : Screw Fixing

Features : Soft Closing Mechanism

Optional Accessories : Hinge Arm Cap



Full-overlay

FAHSC-01 3D



Half-overlay

FAHSC-02 3D



Inset

FAHSC-03 3D

Opening Angle



100°

Screw Distance



45/55mm

Hinge Cup Dia



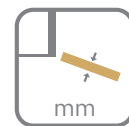
35mm

Hinge Cup Depth



11.5mm

Panel Thickness



16-20mm



SWEDEN

A2 Building Solutions AB
Stora Wäsby, Upplands Väsby
Sweden 19437

DUBAI

A2 Building Solutions
Unit 3509, 35th Floor,
Burlington Tower, Business Bay,
Dubai, UAE
P.O. Box 417764

INDIA

A2 Building Solutions India Pvt. Ltd.
6th Floor, Good Earth Business Bay-1,
Sector-58, Gurgaon

FURNITURE FITTINGS