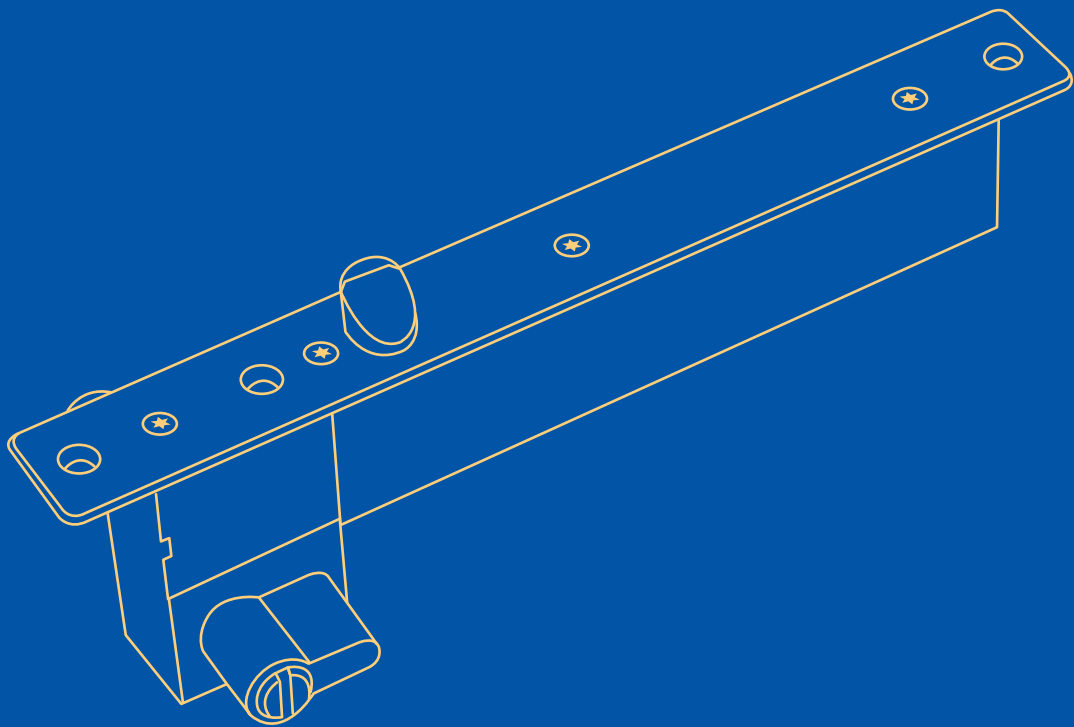




ELECTRO-MECHANICAL LOCKS

A2ND GENERATION OF DOOR HARDWARE



A2BM-FO/FL-SLT

A2BM Surface Mount Intelligent Single Door Electric Bolt, High-Strength Aluminum Alloy Housing, Zinc Alloy Body, 304 Stainless Steel Solid Bolt, processed by CNC, 1000kgs Holding Force, Bolt comes with anti-theft high-strength security design, Metal linkages, works in the 60°C~-40°C temperature, durable magnetic valve applied, special photoelectric control system, ultra-low temperature and power consumption design. LED indicates status, with door status signal output and re-lock time delay function, Fail-safe or fail-secure optional.

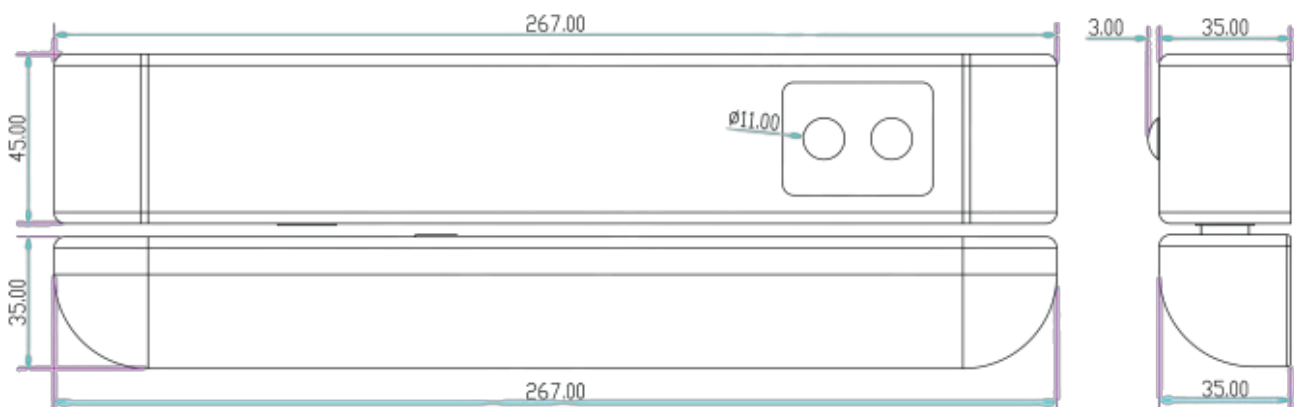


Features

- With the special auto-detection input circuit to open the door instead of shutting off the power directly.
 - Special auto-detection circuit of electric bolt keeps the bolt retracted while the door unlocked or improperly aligned until the door is properly closed.
 - The reed sensor will automatically disconnect when the door is actually closed in order to vandal-proof.
 - Lock state (locked/unlocked) is displayed by LED light
 - Break-in resistance of 20KN force entry
 - Endurance: Tested for over 500,000 times, specially designed solenoid valve can be used for 5~10 years.
 - Special auto-detection circuit of electric bolt keeps the bolt retracted while the door unlocked or improperly aligned until the door is properly closed.
 - Photoelectricity Control: Low Temperature, safety and durable
- A: The low current is changed immediately.
- B: When door frame doesn't coincide with door leaf, door leaf against the bolt, then the electric bolt will start the low-power function to bring low temperature.
- C: The Photoelectricity Control Technology, prevent the mechanical defect.

Technical specifications

- Operation: Fail-safe A2BM-FO-SLT (Power-to-lock)
Fail-secure A2BM-FL-SLT (Power-to-unlock)
- Material: 304 stainless steel solid bolt
- Voltage: 12VDC (24V optional) with energy saving design
- Start / Standby current: 1000mA / 180mA
- Signal output: Door Status (NO/COM)
- Time Delay: 0/3/6/9 sec for locking
- Automatic relocking if no action after 5 seconds
- Induction distance: within 8mm
- Vertical or horizontal installation mode
- Operational temperature range -40 °C to +60 °C
- Certificate: CE, EMC, LVD, FCC, VOC, REACH, WEEE
- Weight: 1.8kg



A2B-FO/FL-SLTC

A2B-FO/FL-SLTC is all-metal body and electric components, with euro type cylinder, makes the lock stronger and more durable, which ensure the lock can work under the harsh environment and work at the temperature of 60°C to -20°C. The bolt of the lock is made of 304 stainless steel solid bar, which can withstand 2000kg holding force. With the multiple designs of durable solenoid valve, special photoelectric control system, ultra-low temperature and power consumption management, vandal resistant circuitry and auto- detection circuitry.

Features

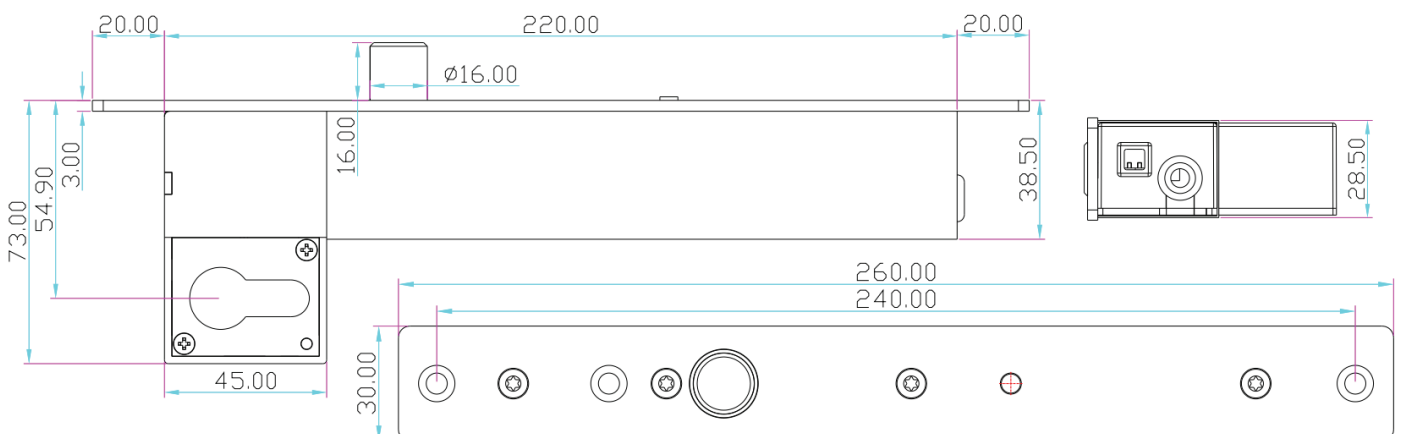
- Equipped with lock cylinder, with realize the dual Purpose, electric and manual control a mechanical emergency exit EN 179 and override key entry, or in order to make EN 13637 scenario by fail-safe model.
 - With the special auto-detection input circuit to open the door instead of shutting off the power directly.
 - Special auto-detection circuit of electric bolt keeps the bolt retracted while the door unlocked or improperly aligned until the door is properly closed.
 - The reed sensor will automatically disconnect when the door is actually closed in order to vandal-proof.
 - Lock state (locked/unlocked) is displayed by LED light
 - Break-in resistance of 20KN force entry
 - Endurance: Tested for over 500,000 times, specially designed solenoid valve can be used for 5~10 years.
 - Photoelectricity Control: Low Temperature, safety and durable
- A: The low current is changed immediately.
- B: When door frame doesn't coincide with door leaf, door leaf against the bolt, then the electric bolt will start the low-power function to bring low temperature.
- C: The Photoelectricity Control Technology, prevent the mechanical defect.



Cylinder not included

Technical specifications

- Operation: Fail-Safe (Power-to-lock) for A2B-FO-SLTC
Fail-secure (Power-to-unlock) for A2B-FL-SLTC
- Special photoelectric: Three steps current application
- Cylinder function: Unlocks key override or Thumb turn
- Material: 304 stainless steel solid bolt with polishing finish
- Voltage: 12 VDC with energy saving design
- Start / Standby current: 1200mA / 200mA
- Time Delay: 0/3/6/9 sec for locking
- Automatic relocking if no action after 5 seconds
- Lock status: Signal output (NC/COM/NO)
- Induction distance: within 8mm
- Vertical or horizontal installation mode
- Operational temperature range -20 °C to +60 °C
- Certificate: CE, EMC, LVD, FCC, VOC, REACH, WEEE
- Weight: 1.8kg



ELECTRO-MECHANICAL LOCK



A2B-FL-SLC

A2B-FL-SLC is all-metal body and electric components with special design of latch bolt in order to use for all DIN R/L Out/In swing doors, with euro type cylinder for emergency exit and override key entry solutions, makes the lock stronger and more durable, which ensure the lock can work under the harsh environment and work at the temperature of 60°C to -20°C. The bolt of the lock is made of 304 stainless steel solid bar, which can withstand 2000kg holding force. With the multiple designs of durable solenoid valve, special photoelectric control system, ultra- low temperature and power consumption management, vandal resistant circuitry and auto-detection circuitry



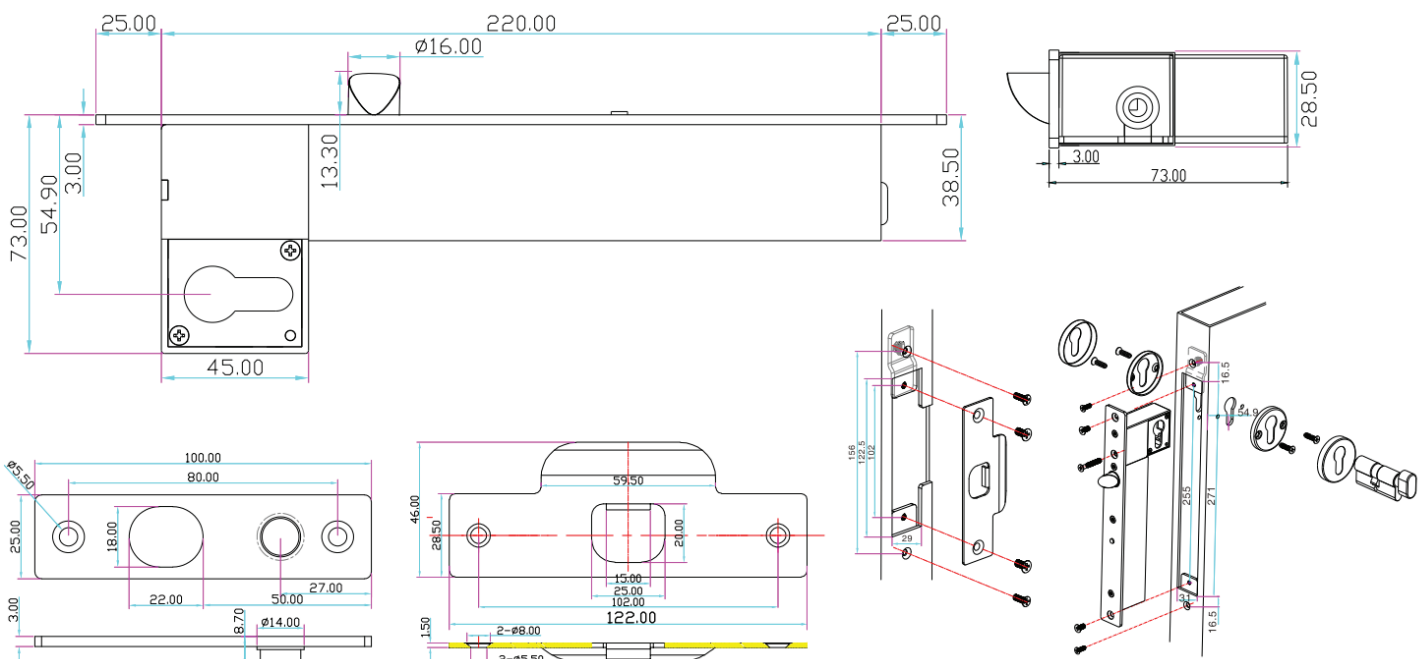
Cylinder not included

Features

- Equipped with lock cylinder, with realize the dual Purpose, electric and manual control as mechanical emergency exit EN 179 and override key entry
- Lock state (locked/unlocked) is displayed by LED light
- Break-in resistance of 20KN force entry
- Special auto-detection circuit of electric bolt keeps the bolt retracted while the door unlocked or improperly aligned until the door is properly closed.
- Endurance: Tested for over 500,000 times, specially designed solenoid valve can be used for 5~10 years.

Technical specifications

- Operation: Fail-secure (Power-to-unlock)
- Cylinder function: Unlocks key override or Thumb turn
- Material: 304 stainless steel solid bolt with polishing finish
- Adjustable latch bolt based on door opening direction
- Voltage: 12 VDC (24 VDC optional)
- Current: 1200mA @ 12V and 600mA @ 24V
- Lock status: Signal output (NC/COM/NO)
- Induction distance: within 8mm
- Vertical or horizontal installation mode
- Operational temperature range -20 °C to +60 °C
- Certificate: CE, EMC, LVD, FCC, VOC, REACH, WEEE
- Weight: 1.8kg



ELECTRIC BOLT LOCK



A2B-FL-SCW

A2B-FL-SCW is an enhanced all-metal construction electric bolt. with European-type cylinder and key function, which has achieved the purpose of double use of electric control and manual control functions.

The 304 stainless steel bolt, produced by CNC Lathe, can withstand 2000kg holding force.

The Professional and durable solenoid valve is qualified after 1 million times of ageing test. Rain-proof design satisfy the installation request of indoor and outdoor, and can installed horizontally or downward.

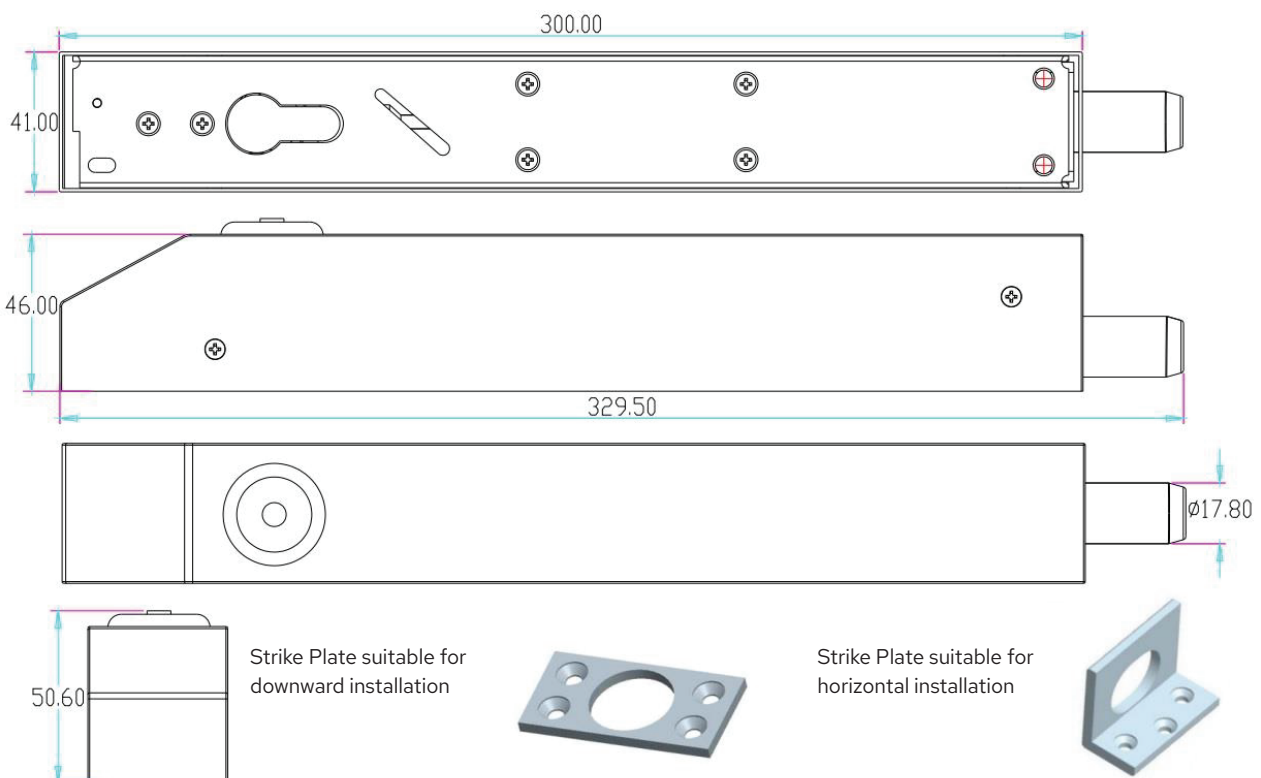


Features

- Special European-type cylinder design, In the daily able to use double function, both entrance guard control "Electronic control" and emergency use "manual".
- Rain-proof design satisfy the installation request of indoor and outdoor, with all-metal construction Lock body.
- Enhanced metal construction, the linkage parts use the strengthen Treatment Design, warranty the product more durable, stronger, can be normally operated under the temperature of heat or severe cold.
- Surface-mounted design, easy to install, stable and durable, Break-in resistance of 20KN force entry
- Endurance: Tested for over 1,000,000 times, specially designed solenoid valve can be used for 5~10 years.

Technical specifications

- Operation: Fail-secure A2B-FL-SCW (Power-to-unlock)
- Material: 304 stainless steel solid bolt and body
- 304 stainless steel solid bolt with polishing finish
- Start / Standby current: 5A / 600mA
- Signal output: Lock Status (NC/COM/NO)
- Vertical or horizontal installation mode Waterproof: IP55
- Operational temperature range -40 °C to +60 °C
- Certificate: CE, EMC, LVD, FCC, VOC, REACH, WEEE
- Weight: 1.8kg



ELECTRO-MECHANICAL LOCK



A2SOL-FO/FL-SC

A2SOL is an electromechanical lock, which is suitable for single or double action doors, including wooden door, metal door, framed glass door and etc. Stainless steel housing, unique design for safety requirement, switches to working mode by manual control. Bolt bears more than 10KN strike, coming with European type cylinder. In working mode, it's under control by electricity while by manual control if under emergency. All linkages are metal structure. Outstanding performance, the best choice for projects, because it is suitable for all conditions; From high security doors to emergency exit safety requirements.



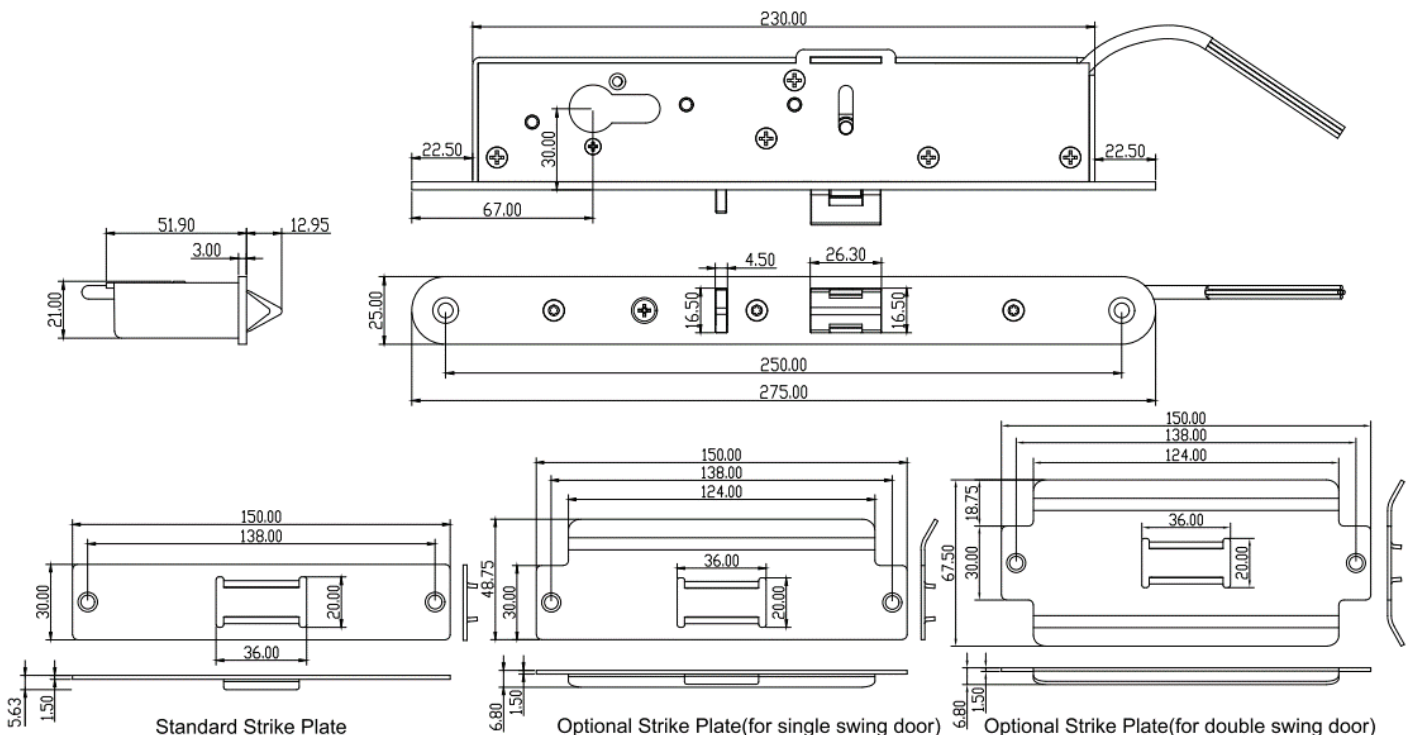
Cylinder not included

Features

- Silent and strong lock suitable for swing doors: single or double action and narrow-frame glass, wooden door or metal door, approved in accordance with EN 13637 (FO model) and also for High Security door with emergency exit device in accordance with EN 179 (FL model)
- Fail safe and fail secure mode adjustable 304 stainless steel panel, stainless steel bolt 304 stainless steel plate for single/double action Resistance to forced entry up to 10,000 N Vertical or horizontal installation mode With door and lock status signal output Electric/automatically locking mode selectable Optional strike plate for single and double action

Technical specifications

- Factory default: A2SOL-FO-SC fail-safe mode and A2SOL-FL-SC is fail-secure and also changeable on site.
- Cylinder function in fail-safe mode: Invalid operation and in fail-secure: unlocks by Override key or Thumb turn.
- Monitoring: Lock signal NC/COM/NO contact. The signal will take effect only when both conditions of closing and locking are met.
- Voltage: 12~24 V DC/AC (Current $\leq 300\text{mA}$)
- Dimensions: 275L x 25W x 51.9H (mm)
- Operational temperature range - 20 °C to +50 °C
- Holding Force: 1000kg Static Strength Rating
- Endurance: Cycle tested to 500,000 operations
- Weight: 1.4kg
- Certificate: CE, EMC, LVD, FCC, VOC, REACH, WEEE



ELECTRO-MECHANICAL LOCK



A2MOL2000-FL-SLTCWH

High Security Motor Driven Mute Electromechanical Lock A2MOL2000, the bolt is controlled by motor drive to realize lock and unlock. The driving force of the motor is very strong, the bolt can be pushed out by the powerful thrust of the motor to align the door when the door is deformed or misaligned. The parts are made of lightweight materials, work more smoothly, less resistance, can achieve mute when lock and unlock. The PCB is equipped with an electronic protection device to realize the precise control of locking and unlocking. In addition, it is waterproof and can be installed on top of rain doors. Also there is two signal outputs for lock and door.



Cylinder not included

Features

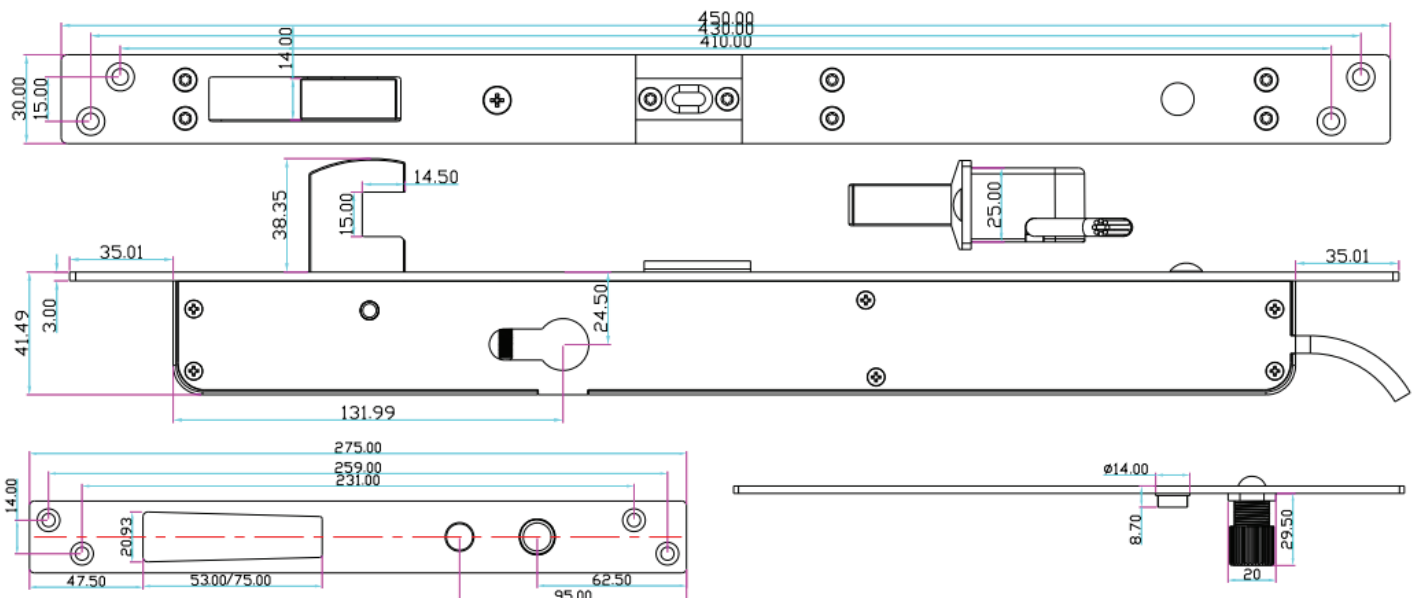
- Equipped with lock cylinder, with realize the dual Purpose, electric and manual control as mechanical emergency exit EN 179 and override key entry.
- With the special auto-detection input circuit to open the door instead of shutting off the power directly.
- The square bolt is made of solid thickened material, made by CNC lathe, with pry proof design, can withstand 20,000kg impact force.
- Auto-lock after door is closed detects by built-in sensor, and can be adjust 0~9s time delay.
- The V-shaped cutout in the locking counterpart tolerates a lateral offset of +/-6 mm
- Functions and lock state is displayed by LED light
- Door status (NO/COM) and Lock status (NC/COM/NO)
- Endurance: Cycle tested to 500,000 operations

Technical specifications

- Operation: Fail-Secure (Power-to-unlock)
- Cylinder function: Unlocks key override or Thumb turn.
- IP65 waterproof and vandal-proof protection
- Material: Brushed 304 stainless steel
- Voltage: 12~24 VDC Current ≤800mA
- Signal output: Door status and also lock status
- Dimensions: 450L x 30W x 41.5H (mm)
- Operational temperature range - 20 °C to +60 °C
- Break-in resistance of 20KN force entry.
- Weight: 2.3kg
- Certificate: CE, EMC, LVD, FCC, VOC, REACH, WEEE

Applications

Suitable for use on doors with seals or subjected to high wind load or air-conditioning pressures, or high-risk locking, banking and any high security applications.

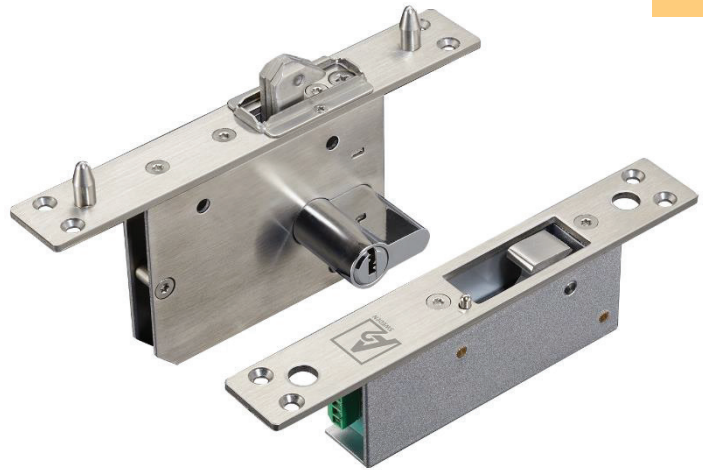


ELECTRO-MECHANICAL LOCK



A2MOL-FO/FL-SCH

A2MOL electric lock for sliding door is all-metal structure, specially designed for sliding door, equipped with European standard lock cylinder. It can achieve the dual purpose of electric control at ordinary times and manual operation in emergency. The bolt is made of solid steel, processed by CNC, and can withstand 800kg push/pull force, special high security design of anti-prying function after locking, and all the linkage parts are made of metal structure, can be used normally from -40 degree to 60 degree. Professional durable solenoid valve, excellent performance, safe and durable, is the first choice for security project.



Cylinder not included

Features

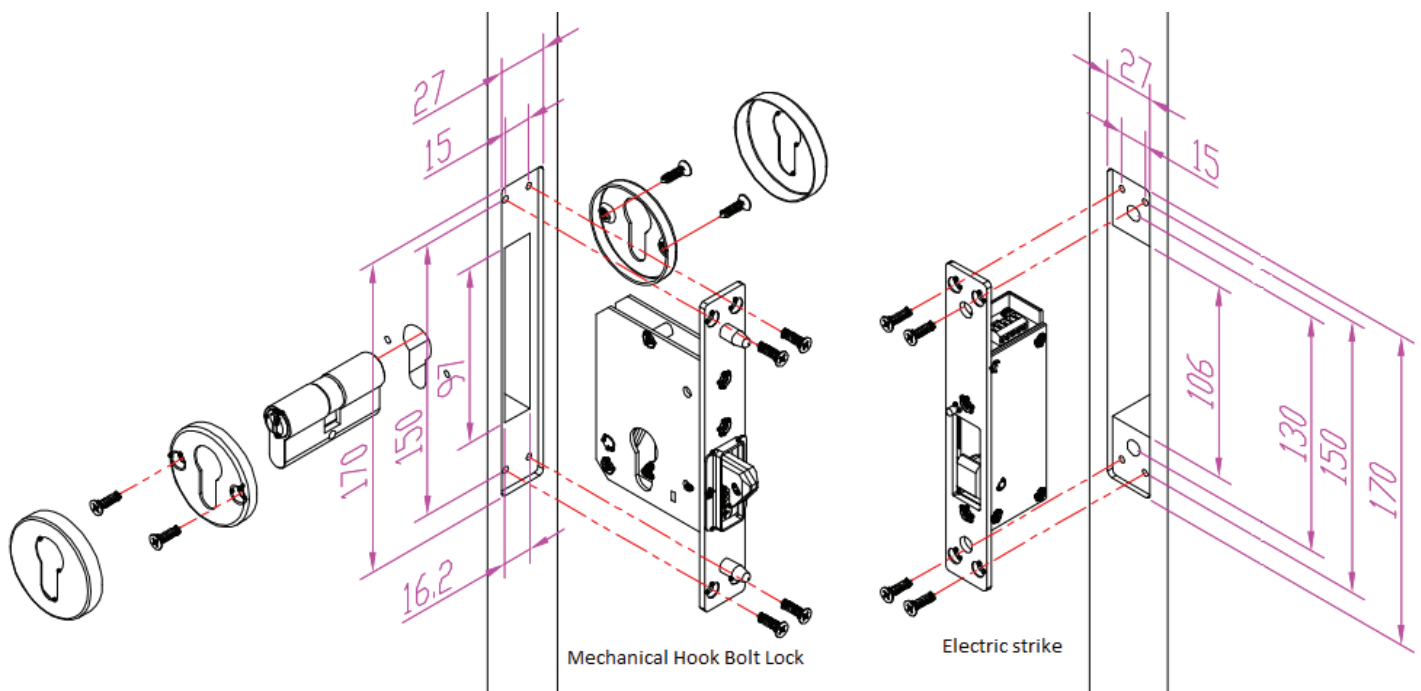
- Electric Hook Bolt Lock for Sliding Doors: Special Design with two Latches and SU 304 Stainless Anti-vandal protector Fail safe A2MOL-FO-SCH and fail secure A2MOL-FL-SCH option suitable for EN 13637 (FO model) and EN 179
- Weather resistance indoor/outdoor use
- Resistance to forced entry up to 8,000 N
- Mechanical Override Key and Electronic Control
- Endurance: Cycle tested to 500,000 operations

Technical specifications

- Cylinder function: Unlocks key override or Thumb turn.
- Voltage: 12 V DC
- Current: 200mA (FO model), 240mA (FL model)
- Door status signal output (NC/COM/NO)
- Dimensions: 170L x 26W x 39.5H (mm) Electric strike\ 170L x 26W x 93H (mm) Mechanical side
- Operational temperature range - 20 °C to +60 °C
- IP65 waterproof and vandal-proof protection
- Weight: 1.4kg
- Certificate: CE, EMC, LVD, FCC, VOC, REACH, WEEE

Applications

A2MOL Hook Lock is suitable for swinging doors and sliding doors. A2MOL is heavy duty designed with its high preload (side load) capability, high holding force and waterproof rating with vandal-proof function. Both Power to Open and Power to Lock models are available.





SWEDEN

A2 Building Solutions AB
Stora Wäsby, Upplands Väsby
Sweden 19437

DUBAI

A2 Building Solutions
Unit 3509, 35th Floor,
Burlington Tower, Business Bay,
Dubai, UAE
P.O. Box 417764

INDIA

A2 Building Solutions India Pvt. Ltd.
6th Floor, Good Earth Business Bay-1,
Sector-58, Gurgaon

**ELECTRO-MECHANICAL
LOCKS**