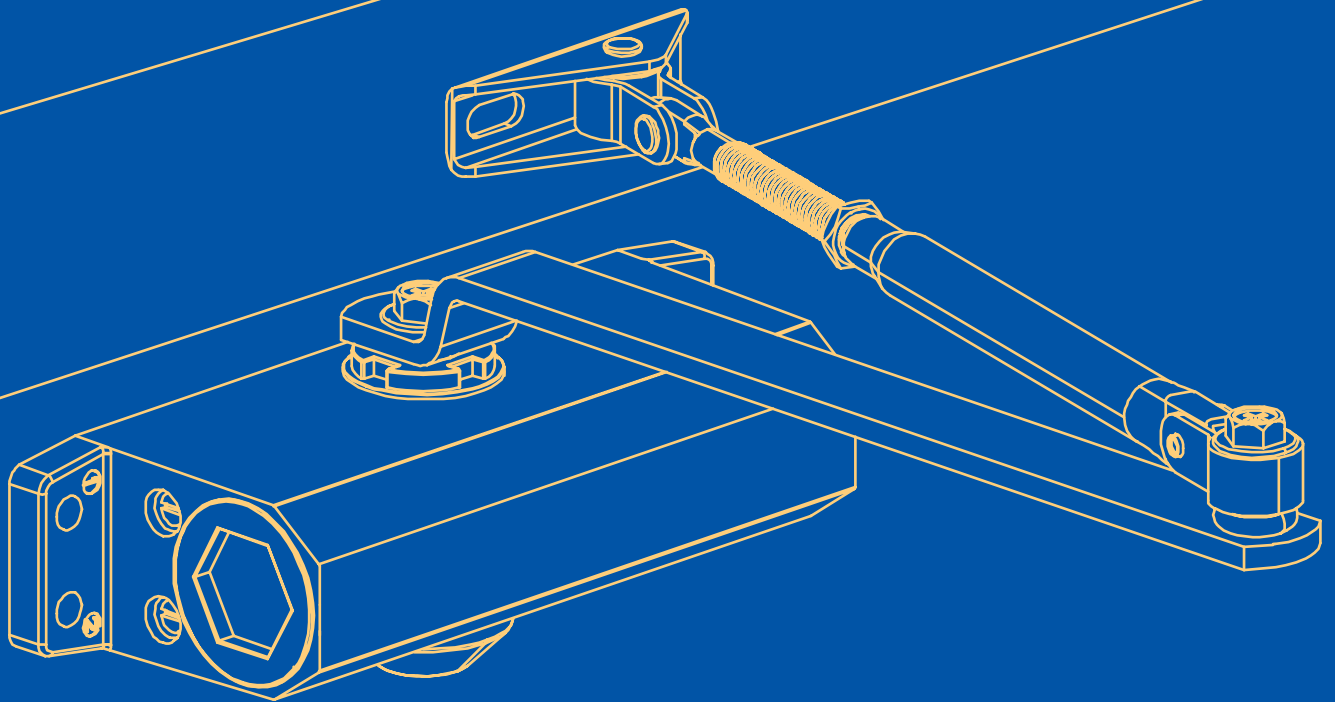




# DOOR CLOSER

A 2<sup>ND</sup> GENERATION OF DOOR HARDWARE



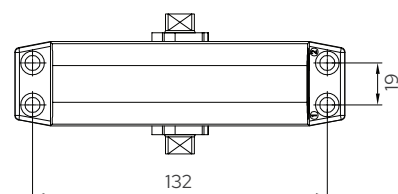
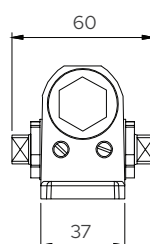
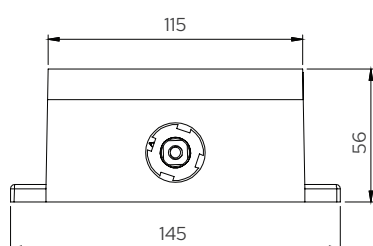
# DC 52 Door Closer

- Surface mounted Rack & Pinion Door closer
- High Strength die cast aluminium body
- Adjustable Latching & Closing speed
- Suitable for Left & Right handed doors
- Tested for 500k cycles as per EN1154



## Technical Parameter

Door Weight (kgs)	Power Size	Door Width (mm)	Product Size (mm)	Hole Distance (mm)	Back Check	Hold Open
25-45	EN 2	850	145×37×56	132x19	No	Optional



# DC 53 Door Closer

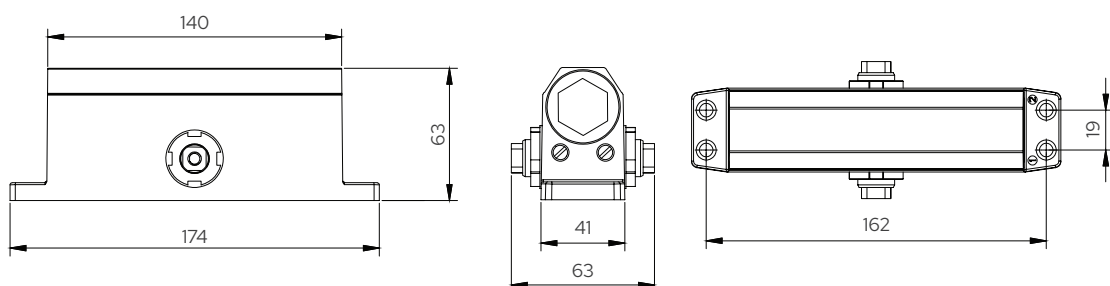
- Surface mounted Rack & Pinion Door closer
- High Strength die cast aluminium body
- Adjustable Latching & Closing speed
- Suitable for Left & Right handed doors
- Tested for 500k cycles as per EN1154



CE

### Technical Parameter

Door Weight (kgs)	Power Size	Door Width (mm)	Product Size (mm)	Hole Distance (mm)	Back Check	Hold Open
45-65	EN 3	950	174×41×63	162x19	No	Optional



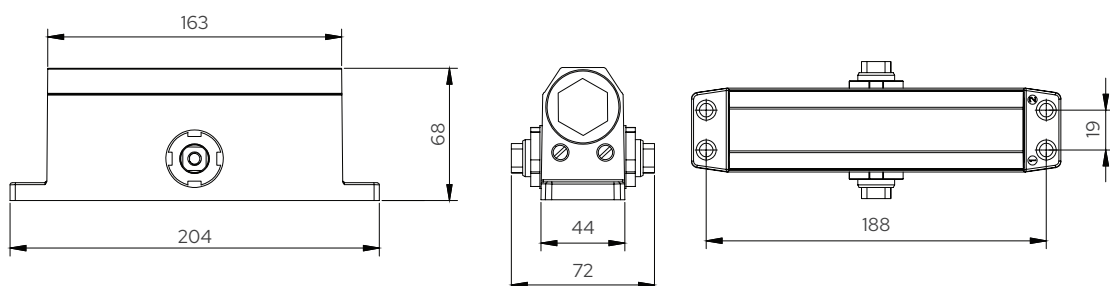
# DC 54 Door Closer

- Surface mounted Rack & Pinion Door closer
- High Strength die cast aluminium body
- Adjustable Latching & Closing speed
- Suitable for Left & Right handed doors
- Tested for 500k cycles as per EN1154



### Technical Parameter

Door Weight (kgs)	Power Size	Door Width (mm)	Product Size (mm)	Hole Distance (mm)	Back Check	Hold Open
60-80	EN 4	1100	204×44×68	188x19	No	Optional



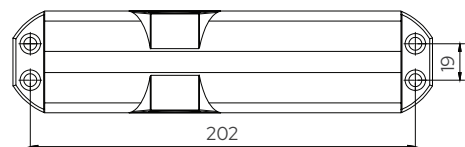
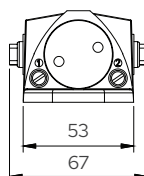
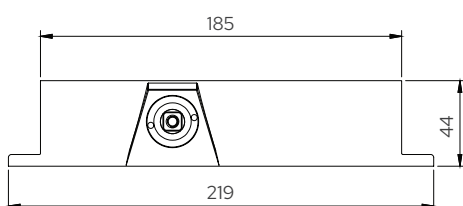
# DC 64 Door Closer

- Surface mounted Rack & Pinion Door closer
- High Strength die cast aluminium body
- Adjustable Latching & Closing speed
- Suitable for Left & Right handed doors
- Tested for 500k cycles as per EN1154



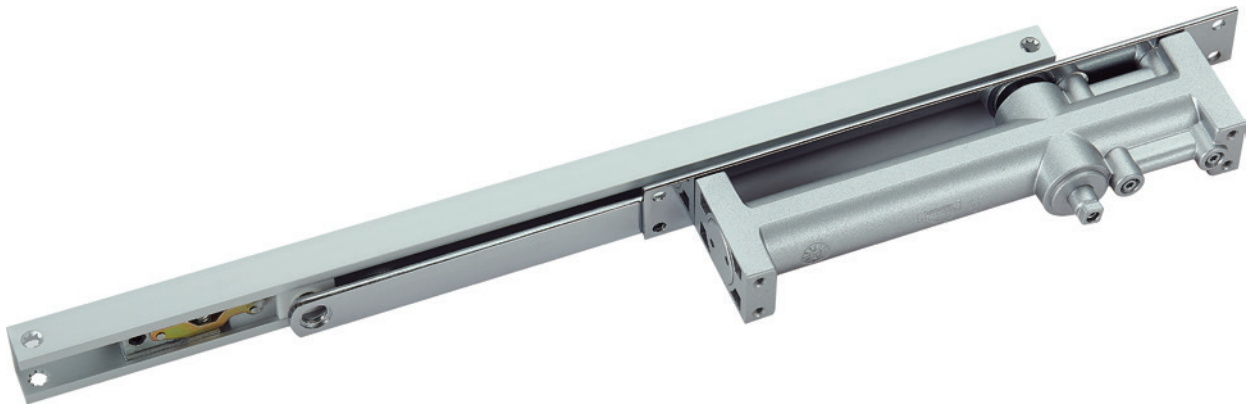
## Technical Parameter

Door Weight (kgs)	Power Size	Door Width (mm)	Product Size (mm)	Hole Distance (mm)	Back Check	Hold Open
60-80	EN 4	1100	219×53×44	202x19	No	Optional



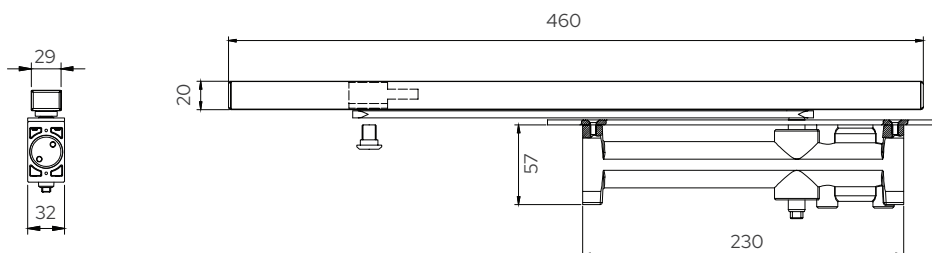
# DC 3004A Door Closer

- Concealed Rack & Pinion Door closer
- High Strength die cast aluminium body
- Adjustable Latching & Closing speed
- Suitable for Left & Right handed doors
- Tested for 500k cycles as per EN1154



## Technical Parameter

Door Weight (kgs)	Power Size	Door Width (mm)
30-60	EN 3	950



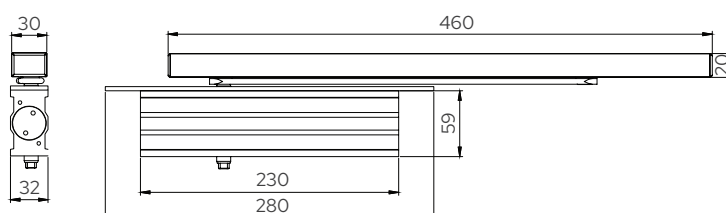
# DC 3004B Door Closer

- Concealed Rack & Pinion Door closer
- High Strength die cast aluminium body
- Adjustable Latching & Closing speed
- Suitable for Left & Right handed doors
- Tested for 500k cycles as per EN1154



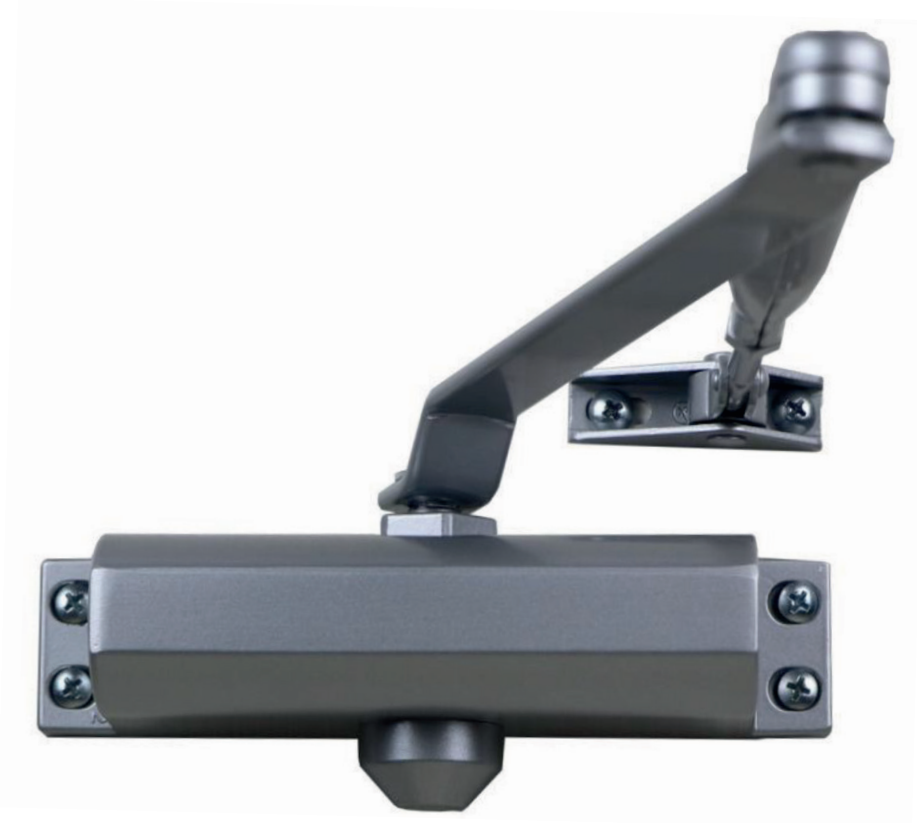
## Technical Parameter

Door Weight (kgs)	Power Size	Door Width (mm)
30-60	EN 3	950



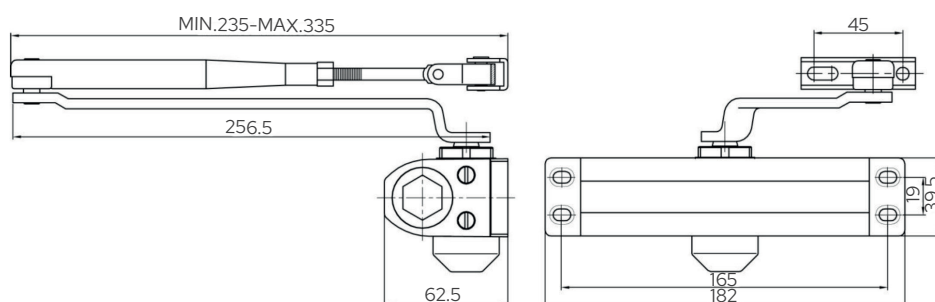
# DC 524 Door Closer

- Surface mounted Rack & Pinion Door closer
- High Strength die cast aluminium body
- Adjustable Latching & Closing speed
- Suitable for Left & Right handed doors
- CE and UL10C Certified



### Technical Parameter

Door Weight (kgs)	Power Size	Door Width (mm)	Product Size (mm)	Hole Distance (mm)	Back Check	Hold Open
20-80	EN 2/3/4	750-1100	182×62.5×39.5	165x19	No	Optional





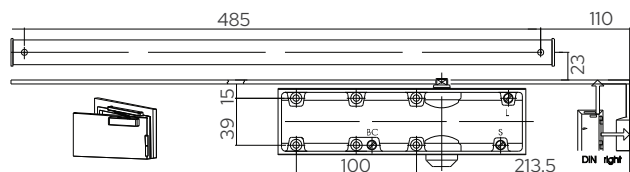
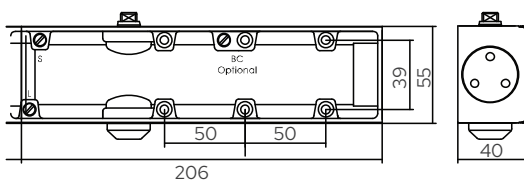
# DC 2004 Door Closer

- Surface mounted Rack & Pinion Door closer
- Adjustable Latching & Closing speed
- Easy adjustable valves on front under the cover
- Suitable for Left & Right handed doors
- Power adjustable #2, #3, #4 by position
- Hold Open Slide Arm Optional



### Technical Parameter

Door Weight (kgs)	Power Size	Door Width (mm)
25-85	EN 2/3/4	1100



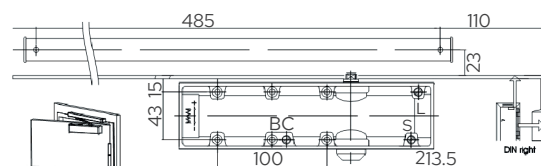
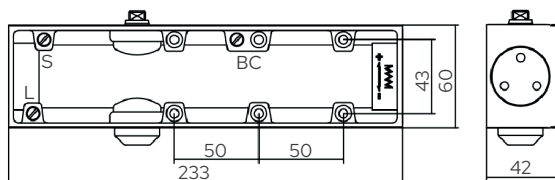
# DC 2025BC Door Closer

- Adjustable Closing & Latching Speed
- European Style Designed Heavy Duty Closer for Commercial Use
- Two Speed valves & Back Check valve on the front of door, closer body hidden under the slide cover
- Power Adjustable #2, #3, #4, #5 by Spring
- For single action doors Max 1250mm width
- Hold Open Slide Arm Optional



### Technical Parameter

Door Weight (kgs)	Power Size	Door Width (mm)	Product Size (mm)	Back Check	Hold Open
20-120	2-5	1250	233x60x42	Yes	Optional



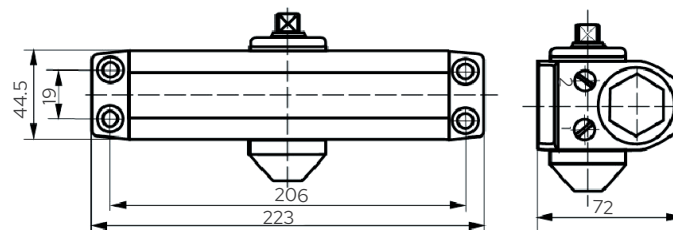
# DC 134 Door Closer

- UL/C-UL Listed, CE Certification
- 500,000 Cycles tested as per EN1154
- Adjustable Closing & Latching Speed
- Universal Application: Standard, Top-Jamb Parallel Arm installation



## Technical Parameter

Door Weight (kgs)	Power Size	Door Width (mm)	Product Size (mm)	Hole Distance (mm)	Back Check	Hold Open
60-85	4	1100	223x72x44.5	206x19	Optional	Optional



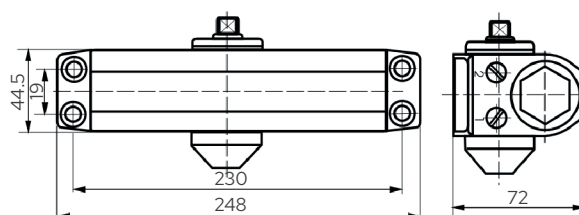
# DC 2014BC Door Closer

- Recommended type for Fire Door, UL 10C Certified
- Meet with ANSI 156.4Grade 1
- 10years Guarantee 2 Million Life Cycles
- Multi-size, Adjustable Spring force from 1 ~ 4
- Rack and pinion mechanism contained in a high tensile precision cast aluminum housing.
- Needle Bearing
- Optional Delay Action and Slim/Full Plastic Cover
- ADA: 2014 with Barrier Free(BF) Function or elderly/handicapped
- Universal application. Non-handed for standard, top jamb or parallel arm installation.



## Technical Parameter

Door Weight (kgs)	Power Size	Door Width (mm)	Product Size (mm)	Hole Distance (mm)	Back Check	Hold Open
15-85	1-4	1100	248×72×44.5	230x19	Yes	Optional



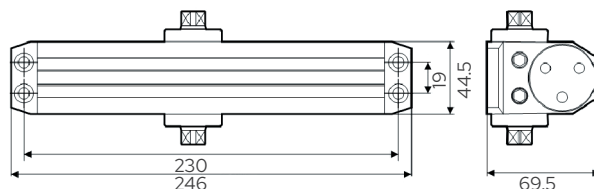
# DC 3016BC Door Closer

- UL and CUL listed; UL 10C fire rated
- Meet with ANSI 156.4 Grade 1.
- 10 years Guarantee 2 Million Life Cycles
- Multi-size, Adjustable Spring force from 1~6
- Rack and pinion mechanism contained in a high tensile precision cast aluminum housing.
- Needle Bearing
- ADA:3016BCwith Barrier Free (BF Function for elderly/handicapped)
- Universal application. Non-handed for standard, top jamb or parallel arm installation.



## Technical Parameter

Door Weight (kgs)	Power Size	Door Width (mm)	Product Size (mm)	Hole Distance (mm)	Back Check	Hold Open
15-150	1-6	1400	246x69.5x44.5	230x19	Yes	Optional



# DC 4016BC Door Closer

- America Style Designed, Heavy Duty for Commercial Doors
- ANSI 156.4 Grade 1, Two Million Cycles in Endurance
- Adjustable Closing & Latching Speed, Adjustable Back-Check, Delay Action Optional
- Precision Heavy Duty Rack (Piston) & Pinion Gear, Needle Bearing.
- Optional Full cover & Slim cover
- Barrier Free, Lower Opening Resistance for the handicapped/elderly
- Multi-size, 1-6



## Technical Parameter

Door Weight (kgs)	Power Size	Door Width (mm)	Product Size (mm)	Hole Distance (mm)	Back Check	Hold Open
15-150	1-6	1400	325x51.5x47	304.8x19	Yes	Optional



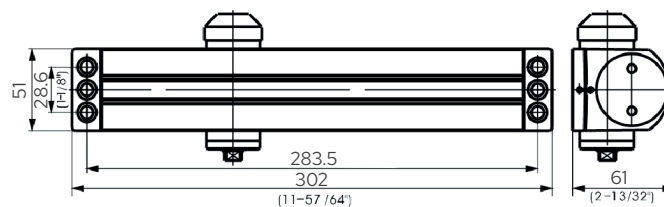
# DC 5016BC Door Closer

- America Style Designed, Heavy Duty for Commercial Doors.
- UL Certificate and UL 10.C 3 Hours fire rated.
- Precise Cast Aluminum Body & Blanking
- Steel Arm, Hold Open Arm Optional.
- Adjustable Closing & Latching Speed, Adjustable Back-Check, Delay Action Optional.
- Precision Heavy Duty Rack (Piston) & Pinion Gear, Needle Bearing.
- Barrier Free, Lower opening resistance for the handicapped/elderly.



## Technical Parameter

Door Weight (kgs)	Power Size	Door Width (mm)	Product Size (mm)	Hole Distance (mm)	Back Check	Hold Open
15-150	1-6	1400	302x61x51	283.5x28.6	Yes	Optional



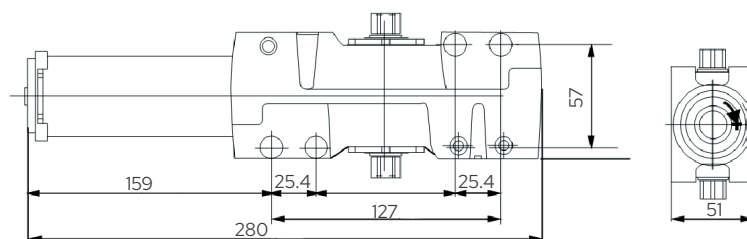
# DC 6000BC Door Closer

- America Style Designed, Heavy Duty for Commercial Doors.
- UL Certificated, 2 Million Cycles in Endurance
- Precise Cast Iron Body & Forged Steel Arm, Hold Open Arm Optional.
- Adjustable Closing & Latching Speed.
- Adjustable Back-Check, Delay Action Optional.
- Precision Heavy Duty Rack(Piston) & Pinion Gear, Needle Bearing.
- Decorative Plastic Cover & Stainless Steel Cover Optional.
- Barrier Free, Lower opening resistance for the handicapped / Elderly.



## Technical Parameter

Door Weight (kgs)	Power Size	Door Width (mm)	Product Size (mm)	Back Check	Hold Open
15-150	1-6	750-1400	280x51x57	Yes	Optional





# DC 6000ELBC Door Closer

- America Style Designed, Heavy Duty for Commercial Doors.
- UL Certificated, 2 Million Cycles in Endurance
- Precise Cast Iron Body & Forged Steel Arm, Hold Open Arm Optional.
- Adjustable Closing & Latching Speed.
- Adjustable Back-Check, Delay Action Optional.
- Precision Heavy Duty Rack(Piston) & Pinion Gear, Needle Bearing.
- Decorative Plastic Cover & Stainless Steel Cover Optional.
- Barrier Free, Lower opening resistance for the handicapped / Elderly.

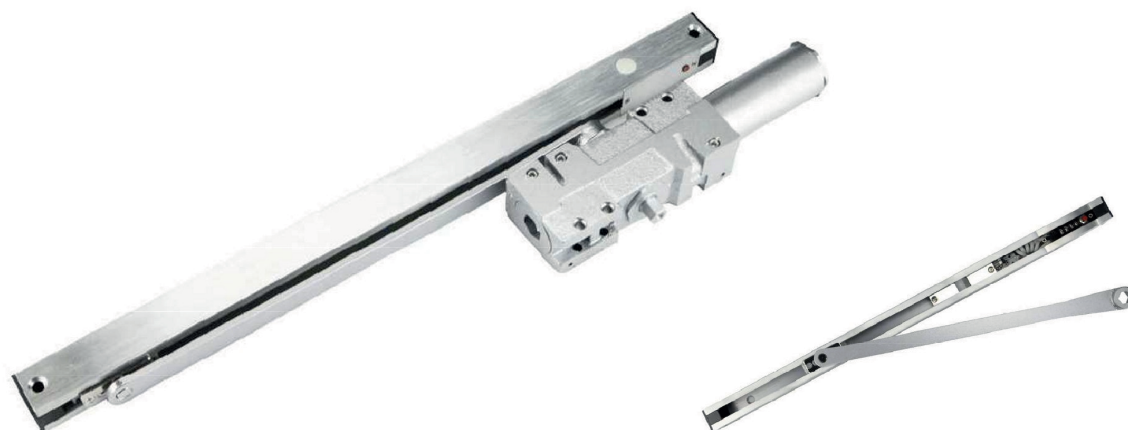
Combine heavy duty closers, the electrically controlled hold-open Slide arm to control fire and smoke barrier doors.

Designed to hold swinging doors open in normal use and release and automatically close the doors under fire conditions.

24V DC or 110V-120V AC input

When current is interrupted, hold-open releases and door closes

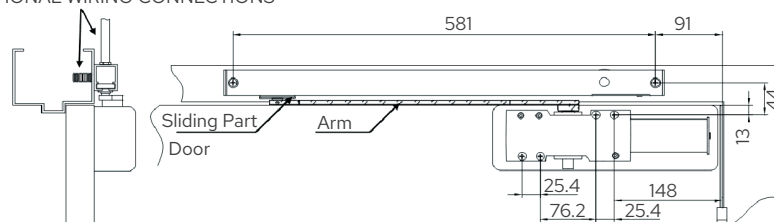
Can be pushed safely and easily out of hold-open Functions as full rack and pinion door closer when hold-open is not engaged or current is interrupted, Adjustable hydraulic backcheck cushions opening swing prior to 90° Separate regulation of general closing speed and latching speed High strength cast iron cylinder Forged steel main arm and piston



### Technical Parameter

Door Weight (kgs)	Power Size	Door Width (mm)	Product Size (mm)	Back Check	Hold Open
15-150	1-6	750-1400	280x51x57	Yes	Optional

### OPTIONAL WIRING CONNECTIONS



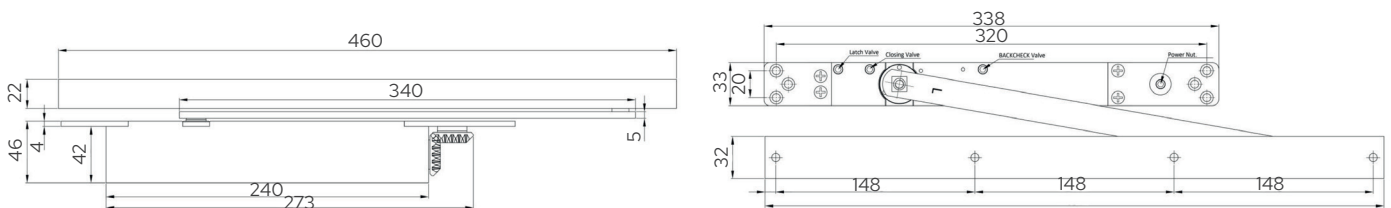
# DC 1000CM Door Closer

- Concealed Door closer with adjustable Closing & Latching Speed
- Cam Action technology for enhanced efficiency & easy of opening
- Suitable for Left & Right handed doors
- CE Certified for 500k cycles as per EN1154



### Technical Parameter

Door Weight (kgs)	Power Size	Door Width (mm)	Product Size (mm)	Back Check	Hold Open
20-80	EN 2-4	750-1100	338x33	Optional	Optional





## SWEDEN

**A2 Building Solutions AB**  
Stora Wäsby, Upplands Väsby  
Sweden 19437

## DUBAI

**A2 Building Solutions**  
Unit 3509, 35<sup>th</sup> Floor,  
Burlington Tower, Business Bay,  
Dubai, UAE  
P.O. Box 417764

## INDIA

**A2 Building Solutions India Pvt. Ltd.**  
6<sup>th</sup> Floor, Good Earth Business Bay-1,  
Sector-58, Gurgaon

DOOR CLOSERS