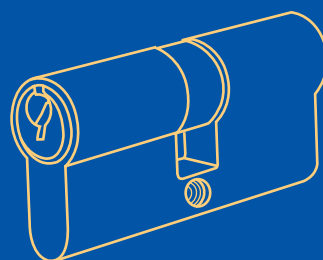




CLASSIQUE LOCK SET

A 2ND GENERATION OF DOOR HARDWARE



Classique Lock Set

A2 Sweden Classique Lock Set is designed for residential / light commercial application. With both Mortise lock and Euro Cylinder included in a single packaging, it gives the benefit of installation convenience and total compatibility.

Key Features of A2 Sweden Classique Lock Set:

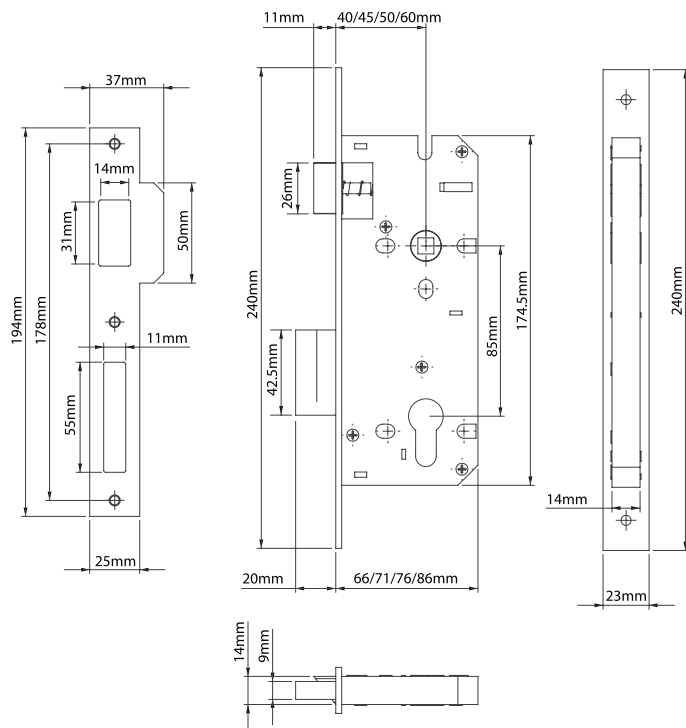
- Packed in a single box
- Cylinder size options for different door thickness*
- Various finish options
- Various mortice lock backset options
- Fully tested to relevant EN standards**

* Suitable for 35 – 48mm door thickness

** Mortise Lock tested to EN12209 and Cylinder tested to EN1303



Classique Lock



Finish Options (Forend / Strike):

- Satin Nickel (SN)
- Antique Brass (AB)
- Polished Brass (PB)
- Satin Stainless Steel (SS)

Backset Options:

40mm, 45mm, 50mm, 60mm

Specifications and Features

- Tested to EN12209
- Durable Brass Latchbolt
- Solid Steel Deadbolt
- Sintered Steel Follower
- Forend and Strike available in Steel or Stainless Steel
- Easy reversible latchbolt for non-handed installation
- Double throw deadbolt for extra security
- Through bolt fixing holes for use with bolt through fixed lever on rose
- Close case design

Classique Lock



Item No.	Backset	Description	Finish
40SN	40mm	A2 Sweden 85 x 40mm Mortise Lock, Satin Nickel	Satin Nickel (SN)
45SN	45mm	A2 Sweden 85 x 45mm Mortise Lock, Satin Nickel	Satin Nickel (SN)
50SN	50mm	A2 Sweden 85 x 50mm Mortise Lock, Satin Nickel	Satin Nickel (SN)
60SN	60mm	A2 Sweden 85 x 60mm Mortise Lock, Satin Nickel	Satin Nickel (SN)



Item No.	Backset	Description	Finish
40PB	40mm	A2 Sweden 85 x 40mm Mortise Lock, Polished Brass	Polished Brass (PB)
45PB	45mm	A2 Sweden 85 x 45mm Mortise Lock, Polished Brass	Polished Brass (PB)
50PB	50mm	A2 Sweden 85 x 50mm Mortise Lock, Polished Brass	Polished Brass (PB)
60PB	60mm	A2 Sweden 85 x 60mm Mortise Lock, Polished Brass	Polished Brass (PB)



Item No.	Backset	Description	Finish
40AB	40mm	A2 Sweden 85 x 40mm Mortise Lock, Antique Brass	Antique Brass (AB)
45AB	45mm	A2 Sweden 85 x 45mm Mortise Lock, Antique Brass	Antique Brass (AB)
50AB	50mm	A2 Sweden 85 x 50mm Mortise Lock, Antique Brass	Antique Brass (AB)
60AB	60mm	A2 Sweden 85 x 60mm Mortise Lock, Antique Brass	Antique Brass (AB)



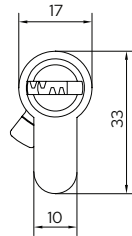
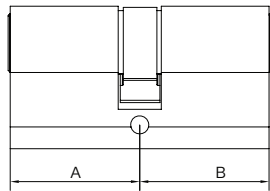
Item No.	Backset	Description	Finish
40SS	40mm	A2 Sweden 85 x 40mm Mortise Lock, Satin Stainless Steel	Satin Stainless Steel (SS)
45SS	45mm	A2 Sweden 85 x 45mm Mortise Lock, Satin Stainless Steel	Satin Stainless Steel (SS)
50SS	50mm	A2 Sweden 85 x 50mm Mortise Lock, Satin Stainless Steel	Satin Stainless Steel (SS)
60SS	60mm	A2 Sweden 85 x 60mm Mortise Lock, Satin Stainless Steel	Satin Stainless Steel (SS)

A2 Profile Cylinder

Euro Cylinder ECD Series

Double Profile Cylinder

Application: Keyed operation from either side (inside or outside).

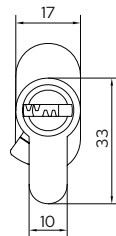
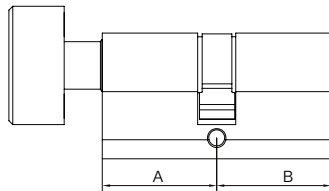


Item No.	A (30-60mm)	B (30-60mm)
ECD3030	30	30
ECD3035	30	35
ECD3535	35	35
ECD3540	35	40

* Dimensions in mm

Double Profile Cylinder with Thumb-turn

Application: Keyed operation from one side (outside) and thumb-turn operated from the other side (inside).



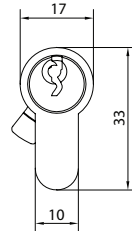
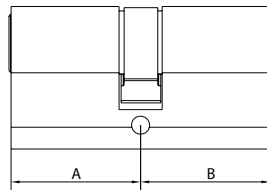
Item No.	A (30-60mm)	B (30-60mm)
ECD3030TK	30	30
ECD3035TK	30	35
ECD3535TK	35	35
ECD3540TK	35	40

* Dimensions in mm

Euro Cylinder ECS Series

Double Profile Cylinder

Application: Keyed operation from either side (inside or outside).

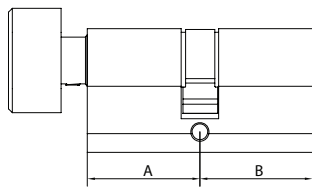


Item No.	A (30-60mm)	B (30-60mm)
ECS3030	30	30
ECS3035	30	35
ECS3535	35	35
ECS4040	40	40

* Dimensions in mm

Double Profile Cylinder with Thumb-turn

Application: Keyed operation from one side (outside) and thumb-turn operated from the other side (inside).

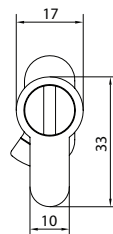
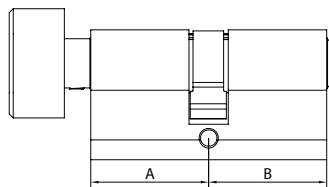


Item No.	A (30-60mm)	B (30-60mm)
ECS3030TK	30	30
ECS3035TK	30	35
ECS3535TK	35	35
ECS4040TK	40	40

* Dimensions in mm

Privacy/Bathroom Cylinder

Application: Thumb-turn operated from inside and emergency release slot operated from outside



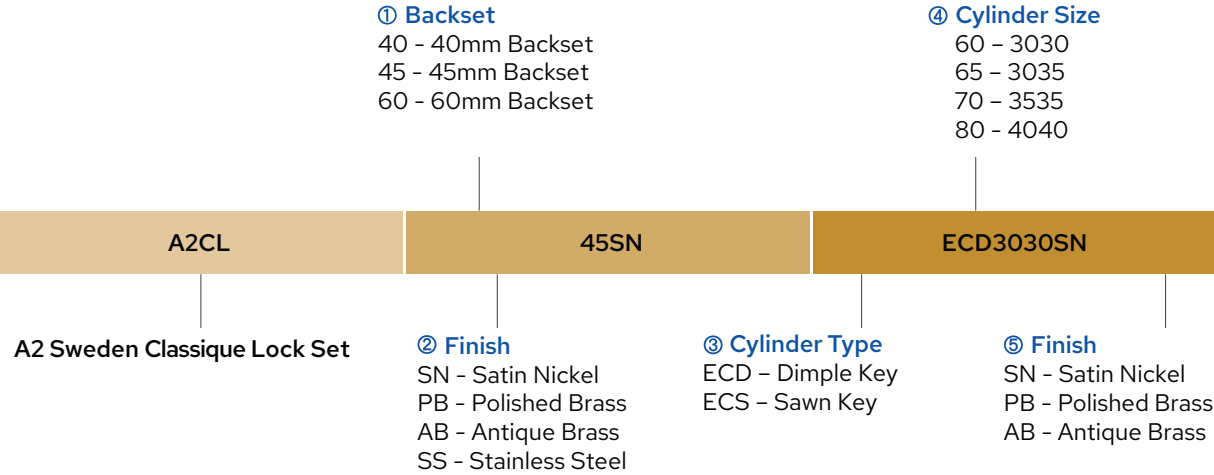
Item No.	A (30-60mm)	B (30-60mm)
ECS3030WC	30	30
ECS3035WC	30	35
ECS3540WC	35	40
ECS4045WC	40	45

* Dimensions in mm

A2 Sweden Classique Lock Set

Ordering Procedure

A2 Sweden Classique Lockset	Lock Variant	Cylinder Variant
-----------------------------	--------------	------------------



Example: A2 Sweden Classique Lock Set

Part Number	A2CL/45SN/ECD3030SN
-------------	---------------------



SWEDEN

A2 Building Solutions AB
Stora Wäsby, Upplands Väsby
Sweden 19437

DUBAI

A2 Building Solutions
Unit 3509, 35th Floor,
Burlington Tower, Business Bay,
Dubai, UAE
P.O. Box 417764

INDIA

A2 Building Solutions India Pvt. Ltd.
6th Floor, Good Earth Business Bay-1,
Sector-58, Gurgaon

CLASSIQUE LOCK SET